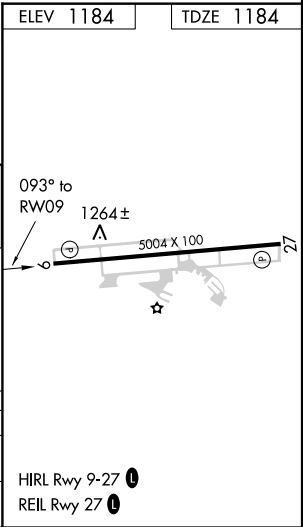
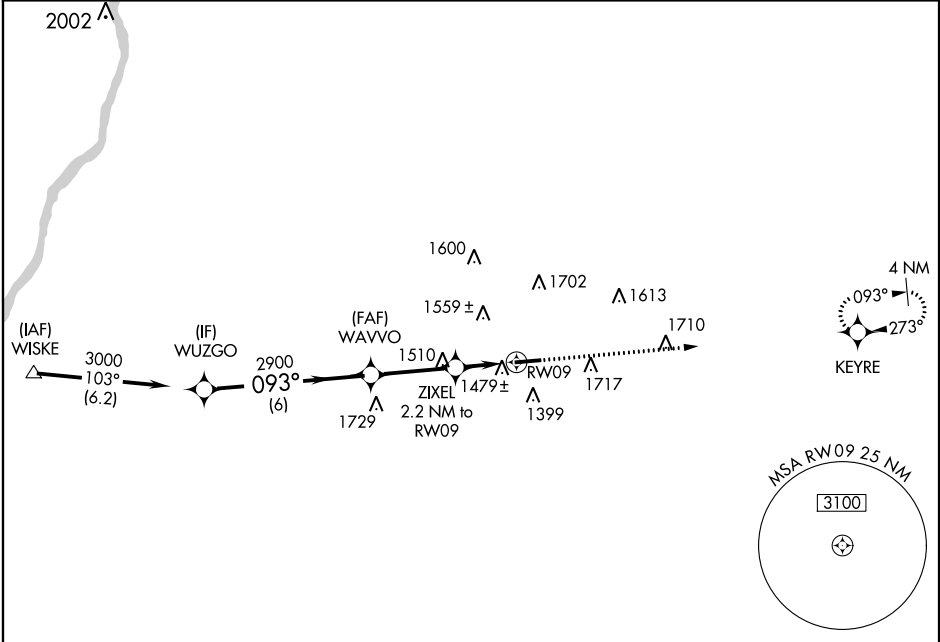


APP CRS 093°	Rwy Idg	5004
	TDZE	1184
	Apt Elev	1184

RNAV (GPS) RWY 9
WASHINGTON COUNTY (AFJ)

<p>▽ DME/DME RNP-0.3 NA. Procedure NA at night. When local altimeter setting not received, use Wheeling altimeter setting and increase all MDA 40 feet, and all Cat C/D visibilities ¼ mile.</p> <p>▲ Helicopter visibility reduction below 1 SM NA.</p>	<p>MISSED APPROACH: Climb to 3000 direct KEYRE and hold.</p>
--	---

AWOS-3PT 119.175	PITTSBURGH APP CON 119.35 285.575	CLNC DEL 127.3	UNICOM 122.975 (CTAF) 0
----------------------------	---	--------------------------	-----------------------------------



NE-4, 31 DEC 2020 to 28 JAN 2021

NE-4, 31 DEC 2020 to 28 JAN 2021