

WAAS
CH **48911**
W13A

APP CRS
128°

Rwy Idg
TDZE
Apt Elev
4500
1885
1915

RNAV (GPS) RWY 13

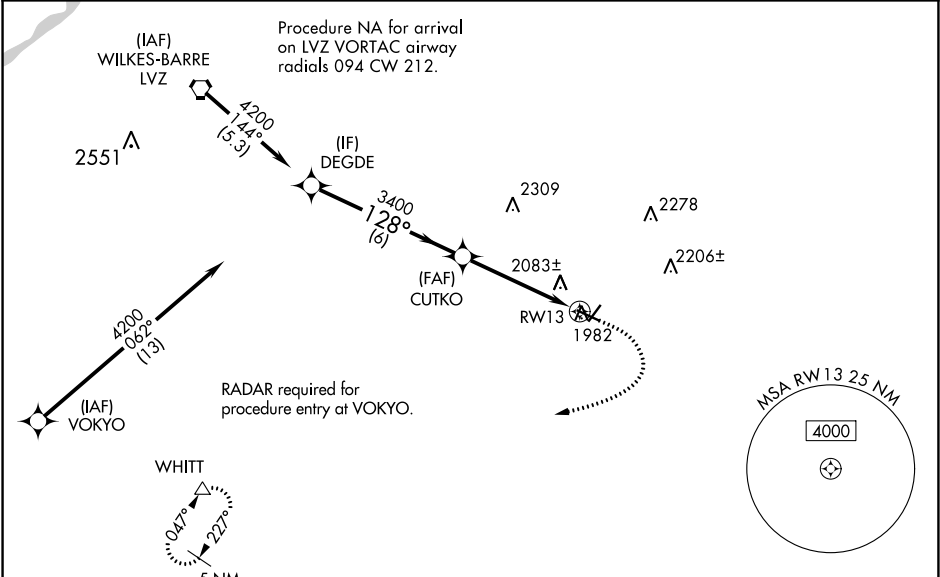
POCONO MOUNTAINS MUNI (MPO)

▼ For uncompensated Baro-VNAV systems, LNAV/VNAV NA below -18° C (0° F) or above 54° C (130° F).

▲ Baro-VNAV and VDP NA when using Wilkes-Barre/Scranton altimeter setting. Rwy 13 helicopter visibility reduction below ¾ SM NA. DME/DME RNP-0.3 NA. When local altimeter setting not received, use Wilkes-Barre/Scranton altimeter setting: increase LPV DA to 2450 feet, LNAV/VNAV DA to 2537 feet and all visibilities ½ SM; increase all MDAs 180 feet and visibility LNAV Cat C/D ¾ SM and Circling Cat C/D ½ SM. Circling Rwy 23 NA at night.

MISSED APPROACH:
Climb to 3000 then climbing right turn to 4200 direct WHITT and hold.

ASOS 120.275	WILKES-BARRE APP CON 126.3 256.7	CLNC DEL 125.3	UNICOM 122.7 (CTAF) 0
------------------------	--	--------------------------	---------------------------------



ELEV 1915	TDZE 1885
-----------	-----------

VGSI and RNAV glidepath not coincident (VGSI Angle 3.00/TCH 44).

DEGDE

4200

128°

CUTKO

3400

3000

4200

WHITT

* LNAV only.

* 1.3 NM to RWY 13

RWY 13

6 NM

3.3 NM

1.3

CATEGORY	A	B	C	D
LPV DA	2271-1¼		386 (400-1¼)	
LNAV/VNAV DA	2358-1½		473 (500-1½)	
LNAV MDA	2340-1	455 (500-1)	2340-1¾	455 (500-1¾)
CIRCLING	2420-1 505 (600-1)	2500-1 585 (600-1)	2600-2 685 (700-2)	2660-2½ 745 (800-2½)

REIL 31

REIL Rwy 5, 13, and 23 0

MIRL Rwy 5-23 and 13-31 0