

WAAS CH <b>50311</b> <b>W05A</b>	APP CRS <b>050°</b>	Rwy Idg TDZE Apt Elev	<b>3999</b> <b>1906</b> <b>1915</b>
--	------------------------	-----------------------------	---

RNAV (GPS) RWY 5

POCONO MOUNTAINS MUNI (MPO)

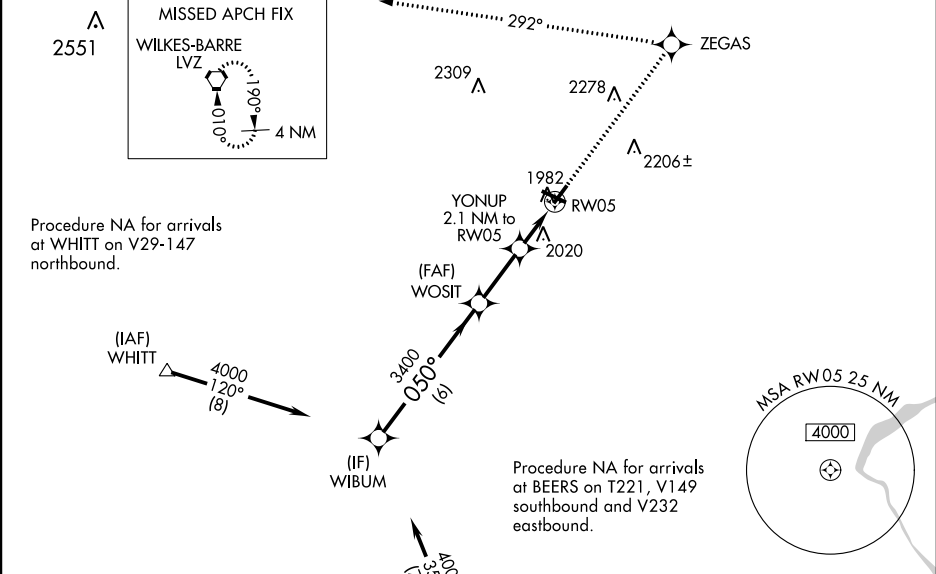
▼

⚠

Baro-VNAV NA when using Wilkes-Barre/Scranton altimeter setting. For uncompensated Baro-VNAV systems, LNAV/VNAV NA below -18°C (0°F) or above 45°C (113°F). DME/DME RNP-0.3 NA. Rwy 5 helicopter visibility reduction below ¾ SM NA. When local altimeter setting not received, use Wilkes-Barre/Scranton altimeter setting: increase LPV DA to 2339 feet, LNAV/VNAV DA to 2431 feet and all visibilities ¼ SM; increase all MDAs 180 feet and visibility Cat C and D ½ SM. Circling Rwy 23 NA at night.

MISSED APPROACH:  
Climb to 4000 direct ZEGAS and left turn via 292° track to LVZ VORTAC and hold.

ASOS <b>120.275</b>	WILKES-BARRE APP CON <b>126.3 256.7</b>	CLNC DEL <b>125.3</b>	UNICOM <b>122.7 (CTAF) ①</b>
------------------------	--	--------------------------	---------------------------------



ELEV 1915

TDZE 1906

Procedure Turn NA

VGSI and RNAV glidepath not coincident. [VGSI Angle 4.00/TCH 43].

4000

WIBUM

050°

WOSIT

YONUP  
2.1 NM to RW05

RW05

292° tr

LVZ

\*LNAV only

GP 3.00°  
TCH 60

3400

\*2600

6 NM

2.4 NM

2.1 NM

CATEGORY	A	B	C	D
LPV DA	2160-1		254 (300-1)	
LNAV/VNAV DA	2252-1¼		346 (400-1¼)	
LNAV MDA	2320-1	414 (500-1)	2320-1¼	414 (500-1¼)
Ⓢ CIRCLING	2480-1 565 (600-1)	2500-1 585 (600-1)	2600-2 685 (700-2)	2660-2½ 745 (800-2½)

050° to RW05

REIL 31

REIL Rwy 5, 13, and 23 ①

MIRL Rwy 5-23 and 13-31 ①

13

0

5001 X 75

3999 X 100

1.0% UP

23

0