

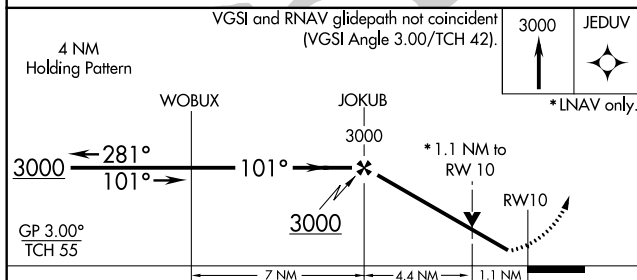
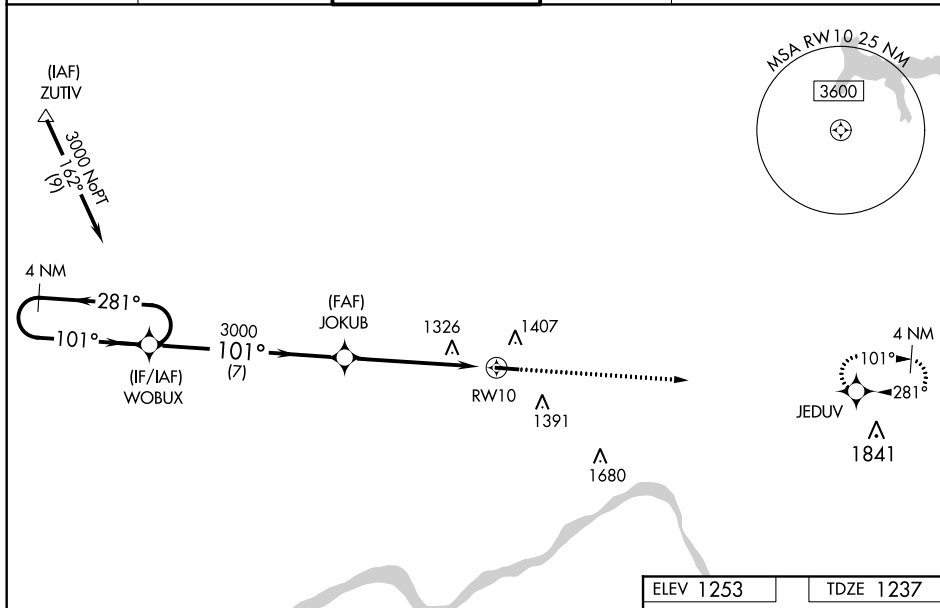
RNAV (GPS) RWY 10

BEAVER COUNTY (BVI)

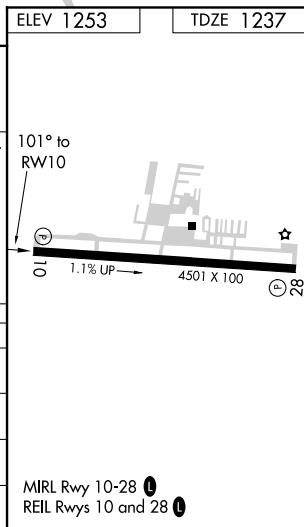
Baro-VNAV and VDP NA when using Pittsburgh Inrl altimeter setting. For uncompensated Baro-VNAV systems, UNAV/VNAV NA below -17°C (2°F) or above 36°C (96°F). When local altimeter setting not received, use Pittsburgh Inrl altimeter setting; increase all DA 50 feet; increase all MDAs 60 feet and visibility UNAV Cats C and D $\frac{1}{8}$ SM. Circling Rwy 28 NA at night. Rwy 10 helicopter visibility reduction below $\frac{3}{4}$ SM NA.

MISSED APPROACH: Climb to 3000 direct JEDUV and hold.

ATIS 118.35	PITTSBURGH APP CON 124.75 338.2	BEAVER COUNTY TOWER* 120.3 (CTAF) 0	GND CON 121.8	CLNC DEL 124.85 (when twr closed)
-----------------------	---	---	-------------------------	--



CATEGORY	A	B	C	D
LPV DA	1528-1 290 (300-1)			
LNAV/ VNAV DA	1514-1 276 (300-1)			
LNAV MDA	1580-1 342 (400-1)			
CIRCLING	1720-1 467 (500-1)	1720-1½ 467 (500-1½)	1820-2 567 (600-2)	



NE-4, 31 DEC 2020 to 28 JAN 2021