

| | | |
|--|------------------------|---|
| WAAS CH 72621 W28A | APP CRS 281° | Rwy Idg 4501 TDZE 1253 Apt Elev 1253 |
|--|------------------------|---|

RNAV (GPS) RWY 28

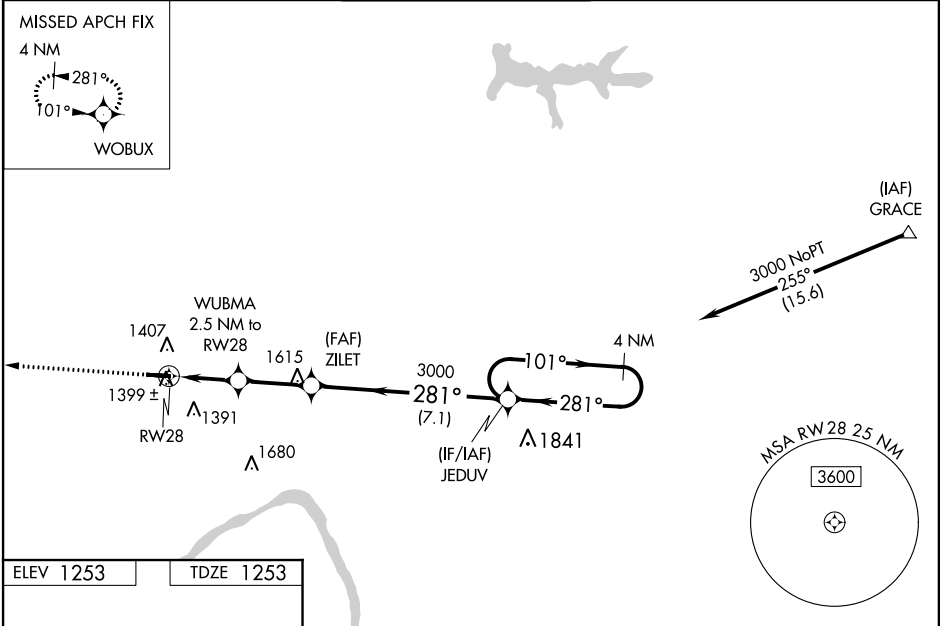
BEAVER COUNTY (BVI)

RNP APCH.

Baro-VNAV and VDP NA when using Pittsburgh Intl altimeter setting. For uncompensated Baro-VNAV systems, LNAV/VNAV NA below -17°C (2°F) or above 26°C (78°F). When local altimeter setting not received, use Pittsburgh Intl altimeter setting; increase all DA 50 feet; increase all MDAs 60 feet and visibility LNAV Cats C and D ¼ SM. Circling Rwy 28 NA at night. Rwy 28 helicopter visibility reduction below ¾ SM NA.

MISSED APPROACH: Climb to 3000 direct WOBUX and hold.

| | | | | |
|-----------------------|---|--|-------------------------|--|
| ATIS 118.35 | PITTSBURGH APP CON 124.75 338.2 | BEAVER COUNTY TOWER ★ 120.3 (CTAF) 0 | GND CON 121.8 | CLNC DEL 124.85 (when twr closed) |
|-----------------------|---|--|-------------------------|--|



ELEV 1253

TDZE 1253

3000 WOBUX

VGSI and RNAV glidepath not coincident (VGSI Angle 3.00/TCH 43).

4 NM Holding Pattern

| CATEGORY | A | B | C | D |
|--------------|--------------------|----------------------|--------------------|---|
| LPV DA | 1512-1 259 (300-1) | | | |
| LNAV/VNAV DA | 1580-1 327 (400-1) | | | |
| LNAV MDA | 1660-1 407 (500-1) | 1660-1½ 407 (500-1½) | | |
| CIRCLING | 1720-1 467 (500-1) | 1720-1½ 467 (500-1½) | 1820-2 567 (600-2) | |