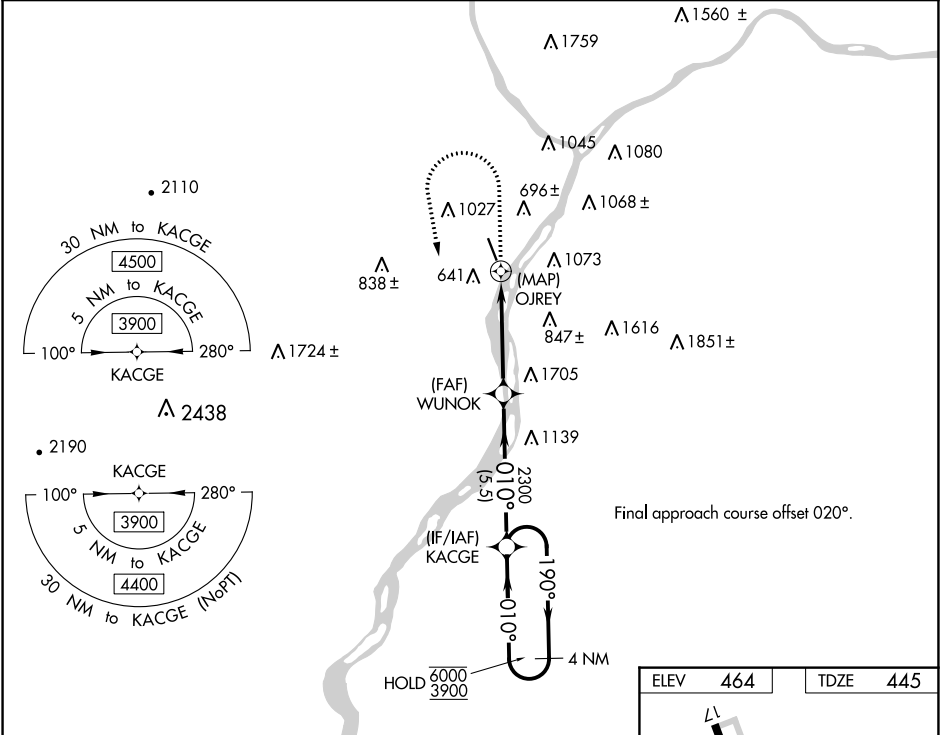


WAAS CH <b>49139</b> <b>W35A</b>	APP CRS <b>010°</b>	Rwy Idg TDZE Apt Elev	<b>4510</b> <b>445</b> <b>464</b>
--	------------------------	-----------------------------	---

RNAV (GPS) RWY 35  
PENN VALLEY (SE/G)

RNP APCH.	<p>⚠ Circling Rwy 17 NA at night. Rwy 35 helicopter visibility reduction below 1 SM NA. Straight-In Rwy 35 at night, operational VGSI required, remain on or above VGSI glidepath until threshold.</p> <p>❄ -14°C</p>	MISSED APPROACH: Climb to 2000 then climbing left turn to 3900 direct KACGE and hold.
-----------	---	---

ASOS <b>123.975</b>	HARRISBURG APP CON <b>118.25 269.45</b>	UNICOM <b>122.7 (CTAF) 0</b>
------------------------	--	---------------------------------



4 NM Holding Pattern		KACGE	2000 3900 KACGE	
6000 3900		190° 010°	WUNOK 2300	
5.5 NM		4.4 NM	0.5 NM	
CATEGORY	A	B	C	D
LP MDA	1200-1 755 (800-1)	1200-1½ 755 (800-1½)	1200-2	755 (800-2)
LNAV MDA	1840-1¼ 1395 (1400-1¼)	1840-1½ 1395 (1400-1½)	1840-3	1395 (1400-3)
CIRCLING	1840-1¼ 1376 (1400-1¼)	1840-1½ 1376 (1400-1½)	1840-3	1376 (1400-3)

