

VORTAC PTW 116.5 Chan 112	APP CRS 211°	Rwy Idg TDZE Apt Elev	N/A N/A 308
-----------------------------------------------	------------------------	-----------------------------	----------------------------------------

VOR/DME-A
HERITAGE FIELD (PTW)

T Circling NA south of Rwy 10 and 28 of Rwy.
A When local altimeter setting not received, use Wings Field
altimeter setting and increase all MDA 40 feet.

MISSED APPROACH: Climbing left turn to 2300 via PTW VORTAC R-031 to ZOBAD Int/PTW 5 DME/RADAR and hold.

ASOS 119,425	PHILADELPHIA APP CON 126.85 263,125	CLNC DEL 118,55	UNICOM 122.7 (CTAF) 0
------------------------	-----------------------------------------------	---------------------------	----------------------------------------

RADAR REQUIRED

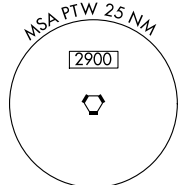
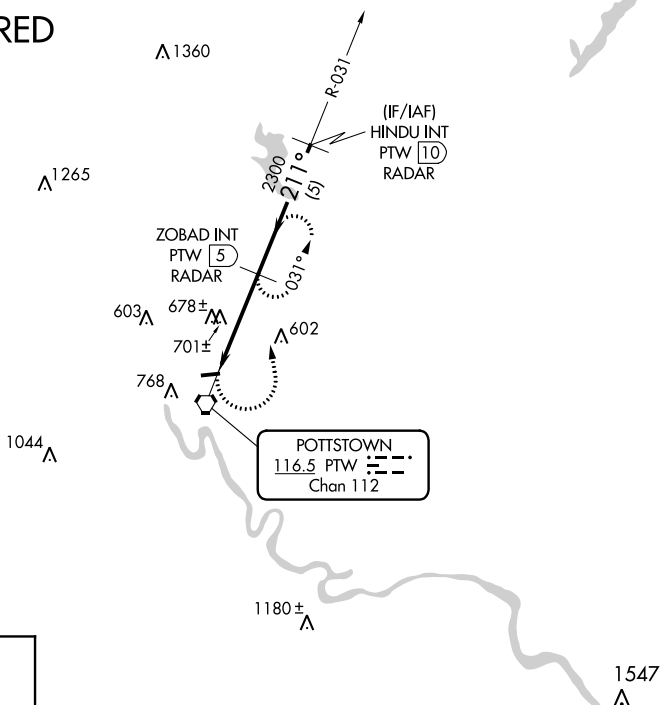


Diagram illustrating the runway layout and distance from the Final Approach Fix (FAF):

- Runway 10-28 is shown, oriented at 211°.
- The distance from the FAF to the runway is 3.9 NM.
- The runway length is 3371 x 75 feet.
- The runway is labeled 10 and 28 at its ends.

Visual Segment - Obstacles.	
	<p>2300</p> <p>PTW R-031</p> <p>ZOBAD INT PTW <u>5</u> RADAR</p> <p>HINDU INT PTW <u>10</u> RADAR</p> <p>2700</p> <p>21°</p> <p>2300</p> <p>3.9 NM</p> <p>5 NM</p> <p>Procedure Turn NA</p>
CATEGORY	A B C D
C CIRCLING	960-1 652 (700-1) NA