

WAAS
CH **61214**
W11A

APP CRS
110°

Rwy Idg
TDZE
Apt Elev
5101
1730
1730

RNAV (GPS) RWY 11

SCHUYLKILL COUNTY/JOE ZERBEY (Z_{ER})

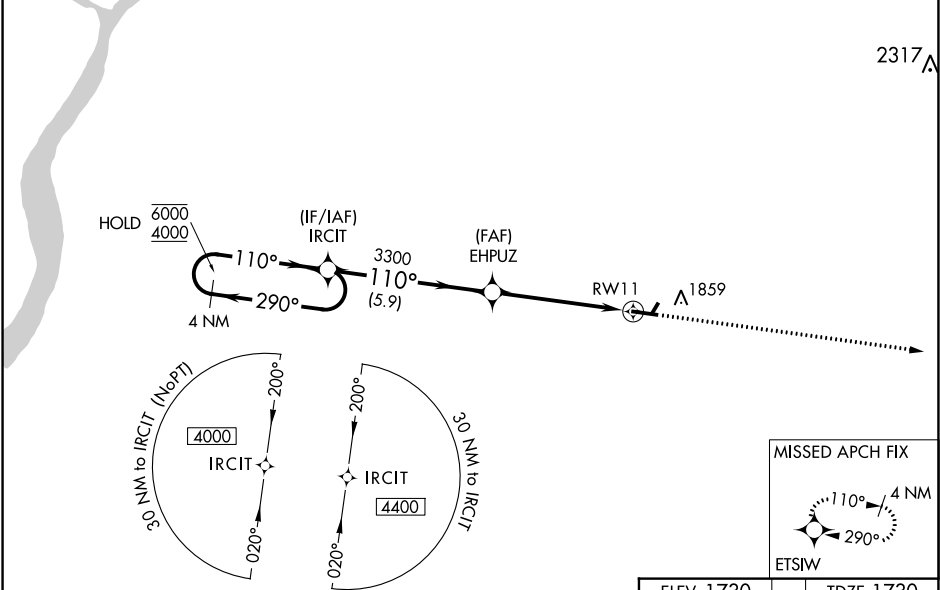
RNP APCH.

NA

Circling NA to Rwy 4 and 22. Baro-VNAV NA when using Selinsgrove altimeter setting. For uncompensated Baro-VNAV Systems, LNAV/VNAV NA below -18°C or above 54°C. When local altimeter setting not received, use Selinsgrove altimeter setting and increase LPV DA to 2191 feet, LNAV/VNAV DA to 2281 feet and all MDAs 280 feet. Increase LPV all Cats visibility 5/8 SM, LNAV/VNAV all Cats visibility 3/4 SM, LNAV Cats C/D visibility 3/8 SM and Circling Cats C/D visibility 3/4 SM. VDP NA when using Selinsgrove altimeter setting.

MISSED APPROACH:
Climb to 4000 direct
ETSIW and hold.

AWOS-3 127.575	HARRISBURG APP CON 118.25 269.45	UNICOM 123.075 (CTAF) 0
--------------------------	--	-----------------------------------



<div>4 NM Holding Pattern</div> <div>IRCIT</div> <div>4000</div> <div>ETSIW</div> <div>6000 ← 290°</div> <div>4000 → 110°</div> <div>GP 3.00° TCH 42</div> <div>EHPUZ</div> <div>3400</div> <div>*1.4 NM to RW11</div> <div>RW11</div> <div>*LNAV only.</div> <div>110° to RW11</div> <div>5101 X 75</div> <div>0.5% UP</div> <div>29</div>				
<div>5.9 NM</div> <div>3.7 NM</div> <div>1.4 NM</div>				
CATEGORY	A	B	C	D
LPV DA	1930-3/4		200 (200-3/4)	
LNAV/DA VNAV	2020-7/8		290 (300-7/8)	
LNAV MDA	2200-1 470 (500-1)		2200-1 3/8 470 (500-1 3/8)	
CIRCLING	2200-1 470 (500-1)		2220-1 1/2 490 (500-1 1/2)	2280-2 550 (600-2)
REIL Rwy 11 and 29 0				
MIRL Rwy 11-29 0				