

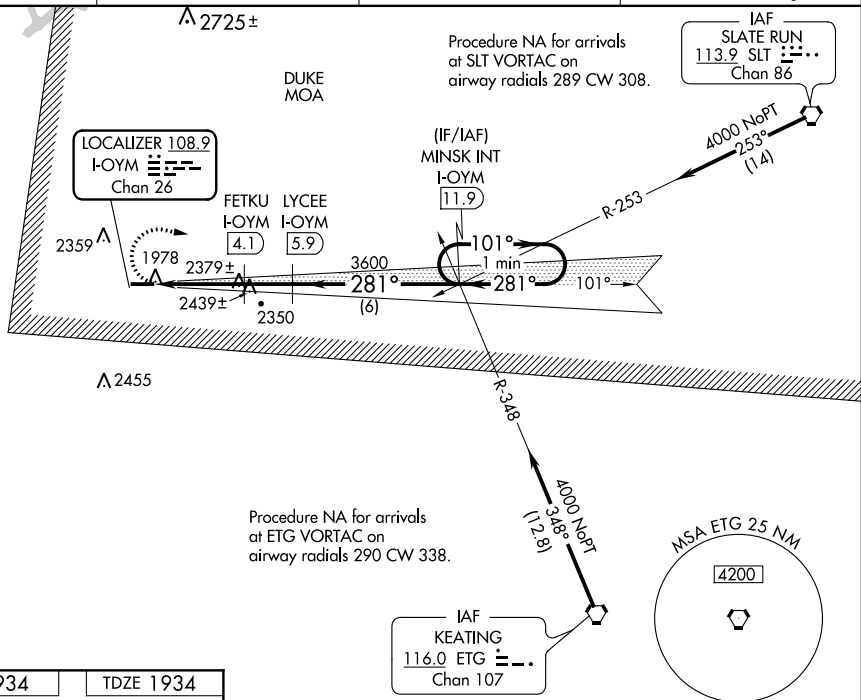
LOC RWY 28
ST MARYS MUNI (OYM)

NA Inop table does not apply to Cat A. Rwy 28 helicopter visibility reduction below $\frac{3}{4}$ SM NA. VDP NA when using Bradford altimeter setting. When local altimeter setting not received, use Bradford altimeter setting and increase all MDA 240 feet, and S-28 Cat B and Circling Cat A/B/D visibility $\frac{1}{4}$ SM and S-28 Cat C/D and Circling Cat C $\frac{1}{2}$ SM. For inop ALS, increase S-28 Cat C/D visibility to $\frac{1}{2}$ SM. For inop ALS when using Bradford altimeter setting, increase S-28 Cat C/D visibility to 3 SM.

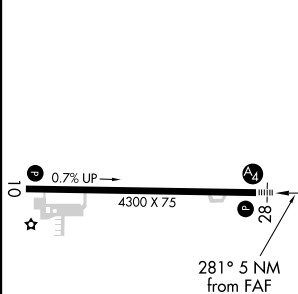
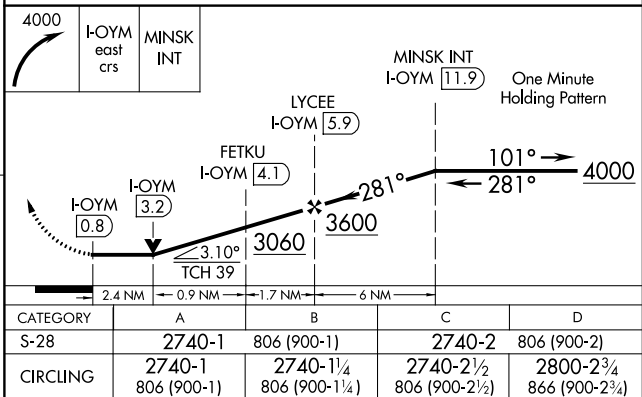
MALS

MISSED APPROACH:
Climbing right turn to
4000 on I-OYM east
course to MINSK INT/
11.9 DME and hold.

AWOS-3P 118.05	CLEVELAND CENTER 126.725 291.65	ALTOONA CLNC DEL 122.4	UNICOM 122.7 (CTAF) U
--------------------------	---	----------------------------------	--



ELEV 1934		TDZE 1934
-----------	--	-----------

MIRL Rwy 10-28 **L**

ST MARYS MUNI (OYM)
LOC RWY 28