

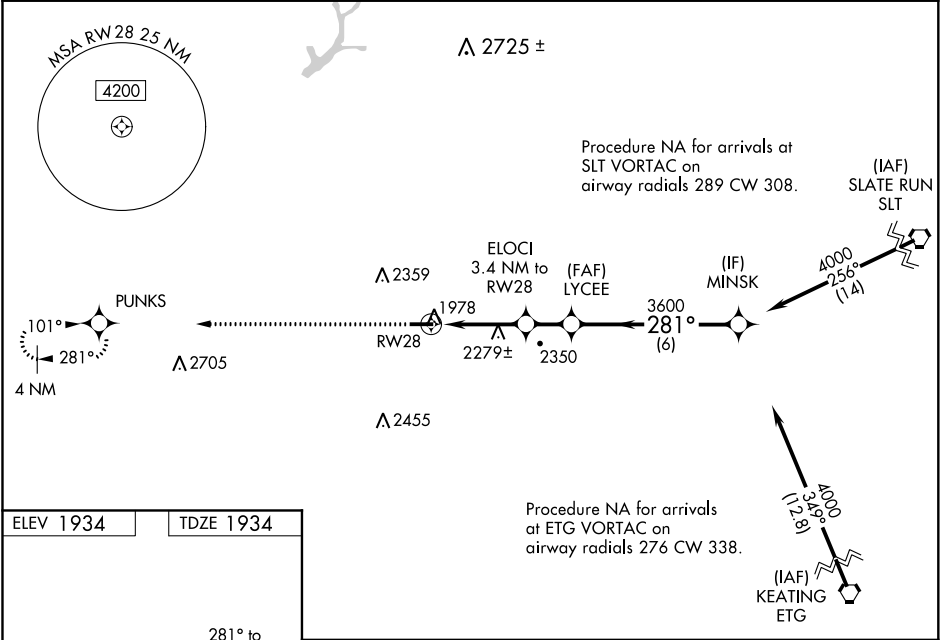
WAAS CH 82302 W28A	APP CRS 281°	Rwy Idg TDZE Apt Elev	4300 1934 1934
--	------------------------	-----------------------------	---

RNAV (GPS) RWY 28

ST MARYS MUNI (OYM)

RNP APCH.	<div>MALS</div> <div></div>	MISSED APPROACH: Climb to 4000 direct PUNKS and hold.
<div><div>▼</div><div>▲ NA</div></div> <div>Rwy 28 helicopter visibility reduction below 3/4 SM NA. Inop table does not apply to LPV all cats and LNAV Cat A/B. VDP NA when using Bradford altimeter setting. When local altimeter setting not received, use Bradford altimeter setting and increase all DA/MDA 240 feet, LPV all cats visibility 3/8 SM, LNAV Cat C/D 3/4 SM, and Circling Cat A/D 1/4 SM and Cat B 1/2 SM and Cat C 1 SM. When using Bradford altimeter setting, inop table does not apply to LNAV Cat C/D. For inop ALS when using Bradford altimeter setting, increase LPV all Cats visibility to 1 1/4 SM and LNAV Cat A/B to 1 1/4 SM.</div>		

AWOS-3P 118.05	CLEVELAND CENTER 126.725 291.65	ALTOONA CLNC DEL 122.4	UNICOM 122.7 (CTAF) 0
--------------------------	---	----------------------------------	---------------------------------



ELEV 1934	TDZE 1934
<div>281° to RW28</div> <div>0.7% UP →</div> <div>4300 X 75</div> <div>28</div> <div>MIRL Rwy 10-28 0</div>	
<div>4000</div> <div>PUNKS</div> <div>*LNAV only.</div> <div>RW28</div> <div>*2.1 NM to RW28</div> <div>ELOCI 3.4 NM to RW28</div> <div>LYCEE 3600</div> <div>MINSK 4000</div> <div>281°</div> <div>3600</div> <div>3040</div> <div>GP 3.00° TCH 40</div>	
<div>2.1 NM</div> <div>1.3 NM</div> <div>1.6 NM</div> <div>6 NM</div>	
CATEGORY	A B C D
LPV DA	2290-1 356 (400-1)
LNAV MDA	2640-1 706 (800-1) 2640-1 3/4 706 (800-1 3/4)
CIRCLING	2640-1 706 (800-1) 2660-1 726 (800-1) 2660-2 726 (800-2) 2800-2 3/4 866 (900-2 3/4)