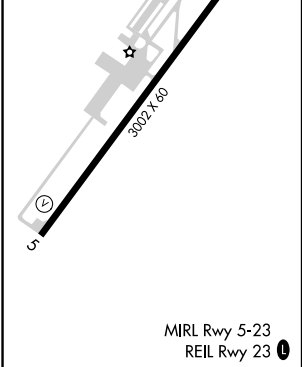
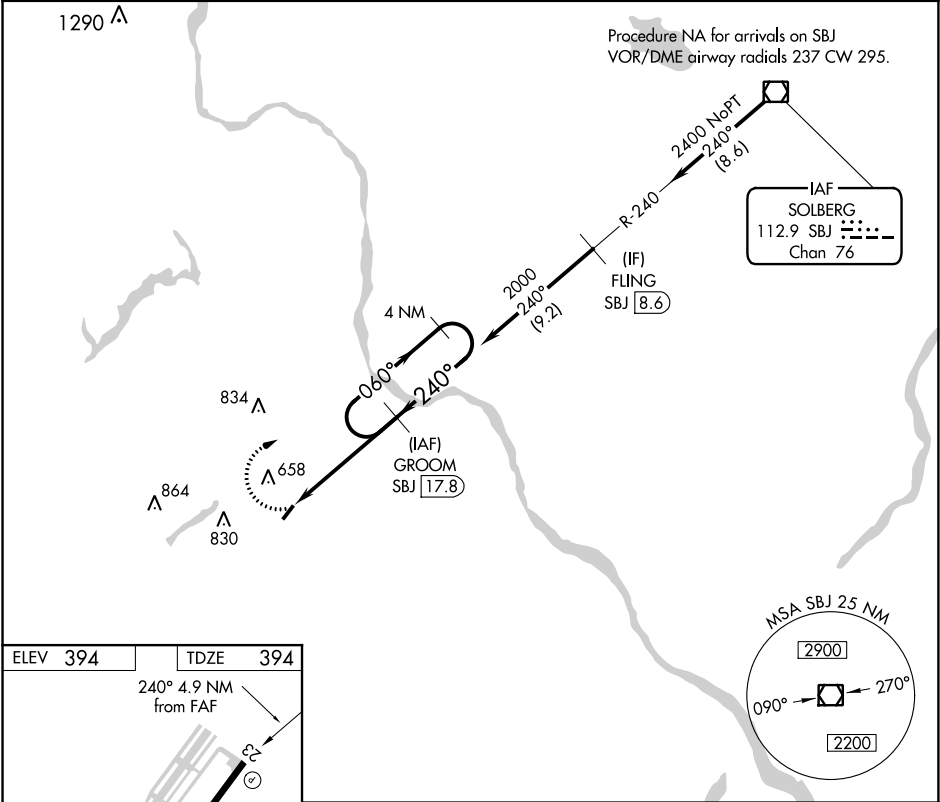


VOR/DME SBJ	APP CRS	Rwy Idg	3002
112.9	240°	TDZE	394
Chan 76		Apt Elev	394

VOR/DME RWY 23  
DOYLESTOWN (DYL)

<p>When local alimeter setting not received, use Trenton alimeter setting and increase all MDA 60 feet and increase S-23 Cat B visibility ¼ mile. Rwy 23: helicopter visibility reduction below 1 SM NA.</p>	MISSED APPROACH: Climbing right turn to 2000 on SBJ R-240 to GROOM/17.8 DME and hold.
--	---

ASOS 118.875	PHILADELPHIA APP CON 123.8 291.7	CLNC DEL 118.55	UNICOM 122.975 (CTAF) 0
-----------------	-------------------------------------	--------------------	----------------------------



2000	SBJ R-240	GROOM SBJ 17.8	4 NM Holding Pattern	
		GROOM SBJ 17.8		
SBJ 22.8		060° → ← 240° 2000		
240°		VGSI and descent angles not coincident.		
3.00° TCH 40				
4.9 NM				
CATEGORY	A	B	C	D
S-23	1100-1 706 (800-1)		NA	
CIRCLING	1100-1 706 (800-1)	1100-1¼ 706 (800-1¼)	NA	