

APP CRS
076°

Rwy Idg 4002
TDZE 1228
Apt Elev 1228

RNAV (GPS) RWY 8
ROSTRAVER (FWQ)

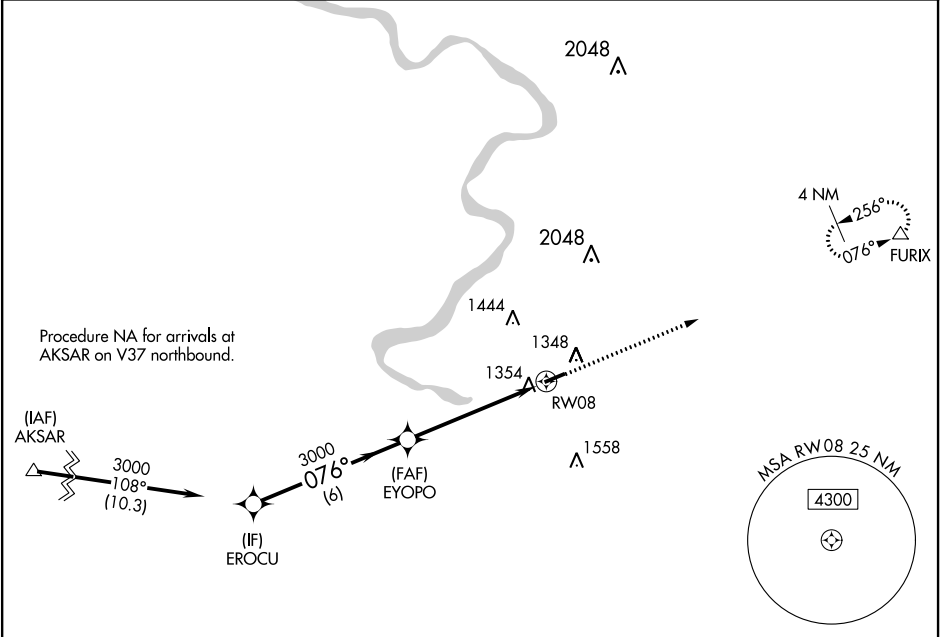
▼

▲ NA

When VGSi inop, Straight-in/Circling Rwy 8 procedure NA at night. DME/DME RNP-0.3 NA. When local altimeter setting not received, use Allegheny County altimeter setting and increase all MDA 40 feet; increase LNAV Cats C/D visibility 1/8 mile. Rwy 8 helicopter visibility reduction below 1 SM NA. Rwy 26 helicopter visibility reduction below 3/4 SM NA.

MISSED APPROACH:
Climb to 3700 direct
FURIX and hold.

AWOS-3 118.475	PITTSBURGH APP CON 119.35 337.4	UNICOM 122.8 (CTAF) 0
-------------------	------------------------------------	--------------------------



ELEV 1228

TDZE 1228

3700 FURIX

▲

EROCU

EYUPO

RW08

3000

076°

3000

3.00° TCH 51

6 NM

5.4 NM

CATEGORY	A	B	C	D
LNAV MDA	1720-1	492 (500-1)	1720-1 3/8	492 (500-1 3/8)
CIRCLING	1720-1	492 (500-1)	1720-1 1/2	1780-2

MIRL Rwy 8-26 0

REIL Rlys 8 and 26 0