

WAAS
CH **61228**
W29A

APP CRS
291°

Rwy Idg
TDZE
Apt Elev

3020
525
525

RNAV (GPS) RWY 29
QUAKERTOWN (UKT)

RNP APCH.

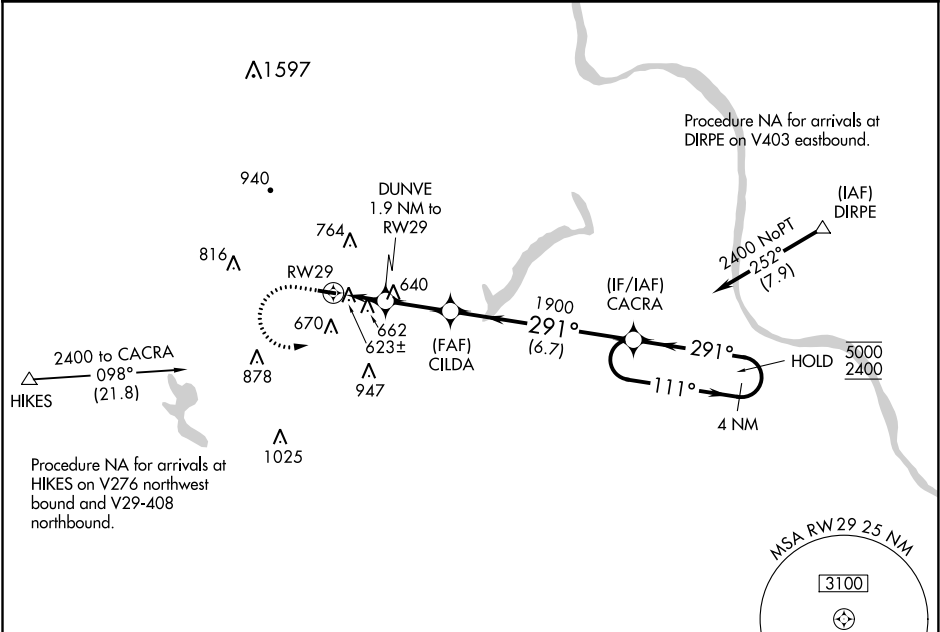
▼

▲

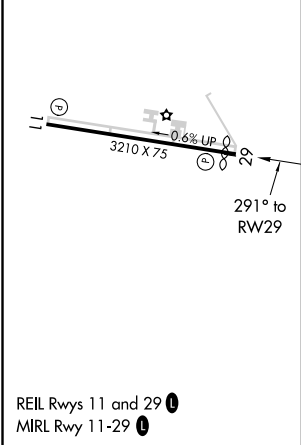
Procedure NA at night.
Rwy 29 helicopter visibility reduction below 1 SM NA.




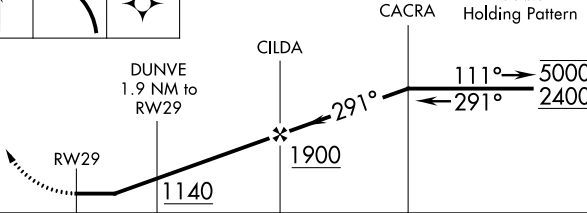
MISSED APPROACH: Climb to 1000, then climbing left turn to 2400 direct CACRA and hold.

AWOS-3 119.475	PHILADELPHIA APP CON 123.8 291.7	CLNC DEL 118.55	UNICOM 122.725 (CTAF) 0
--------------------------	--	---------------------------	-----------------------------------



ELEV 525	D	TDZE 525
----------	----------	----------



1000	2400	CACRA	Visual Segment - Obstacles.				
							
							
CATEGORY			A		B	C	D
LP MDA			920-1 395 (400-1)		920-1½ 395 (400-1½)		NA
LNAV MDA			960-1 435 (500-1)		960-1⅜ 435 (500-1⅜)		NA
C CIRCLING			1040-1 515 (600-1)		1080-1 555 (600-1)	1220-2 695 (700-2)	NA