

WAAS CH <b>45605</b> <b>W23A</b>	APP CRS <b>229°</b>	Rwy Idg TDZE <b>1027</b> Apt Elev <b>1070</b>	<b>3995</b> <b>1027</b> <b>1070</b>
--	------------------------	---	---

RNAV (GPS) RWY 23

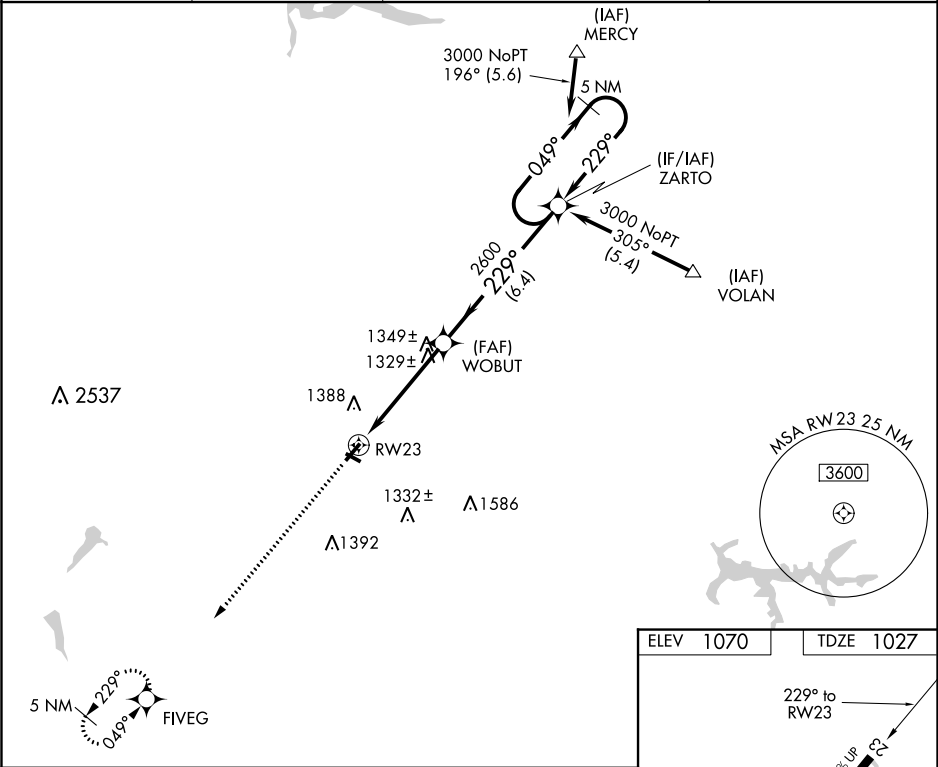
NEW CASTLE MUNI (UCP)

RNP APCH.

VDP NA when using Youngstown-Warren Rgnl altimeter setting. When local altimeter setting not received, use Youngstown-Warren Rgnl altimeter setting and increase all DA 61 feet and all MDA 80 feet; increase LNAV Cat C and Circling Cat C visibility ¼ SM.

MISSED APPROACH:  
Climb to 3600 direct  
FIVEG and hold.

AWOS-3PT <b>124.175</b>	YNG ASOS <b>123.75</b>	YOUNGSTOWN APP CON ★ <b>133.95 322.3</b>	UNICOM <b>123.0 (CTAF) 0</b>
----------------------------	---------------------------	---	---------------------------------



3600	FIVEG	VGSI and RNAV glidepath not coincident (VGSI Angle 3.00/TCH 40).				ZARTO	5 NM Holding Pattern
*LNAV only.		*1.7 NM to RW23	WOBUT	2600	229°	049° →	3000
			RW23	2600	← 229°		GP 3.00° TCH 59
		1.7 NM	3.1 NM	6.4 NM			
CATEGORY	A	B	C	D			
LPV DA	1288-1	261 (300-1)		NA			
LNAV MDA	1580-1	553 (600-1)	1580-1½ 553 (600-1½)	NA			
CIRCLING	1580-1 510 (600-1)	1700-1 630 (700-1)	1700-1¾ 630 (700-1¾)	NA			

