

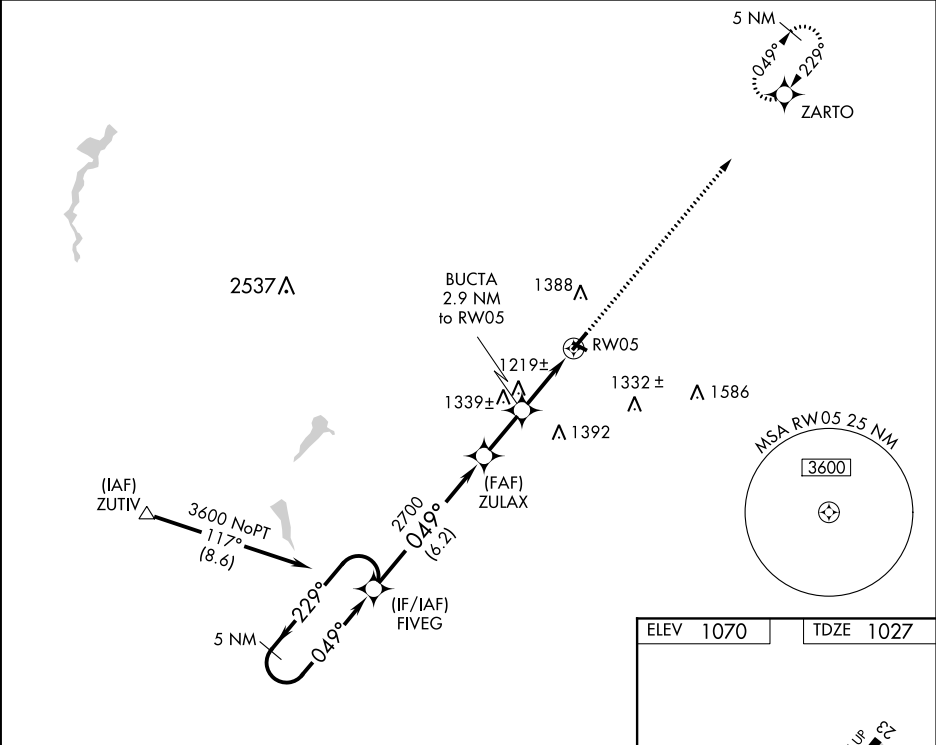
WAAS	APP CRS	Rwy Idg	3995
CH 78005	049°	TDZE	1027
W05A		Apt Elev	1070

RNAV (GPS) RWY 5

NEW CASTLE MUNI (UCP)

RNP APCH	VDP NA when using Youngstown-Warren Rgnl altimeter setting. Rwy 5 helicopter visibility reduction below ¾ SM NA. When local altimeter setting not received, use Youngstown-Warren Rgnl altimeter setting and increase all DA 61 feet and all MDA 80 feet; increase LNAV Cat C and Circling Cat C visibility ½ SM.	MISSED APPROACH: Climb to 3000 direct ZARTO and hold.
----------	---	---

AWOS-3PT 124.175	YNG ASOS 123.75	YOUNGSTOWN APP CON ★ 133.95 322.3	UNICOM 123.0 (CTAF) ①
---------------------	--------------------	--------------------------------------	--------------------------



5 NM Holding Pattern				
FIVEG				
ZULAX				
BUCTA 2.9 NM to RW05				
*1.3 NM to RW05				
RW05				
*2000				
6.2 NM 2.1 NM 1.6 NM 1.3 NM				
CATEGORY	A	B	C	D
LPV DA	1307-1	280 (300-1)		NA
LNAV MDA	1480-1	453 (500-1)	1480-1 ¾ 453 (500-1 ¾)	NA
CIRCLING	1580-1 510 (600-1)	1700-1 630 (700-1)	1700-1 ¾ 630 (700-1 ¾)	NA

