

WAAS
CH **78107**
W24A

APP CRS
239°

Rwy Idg
TDZE
818
Apt Elev
819

RNAV (GPS) RWY 24

MIFFLIN COUNTY (RVL)

RNP APCH

▼

⚠

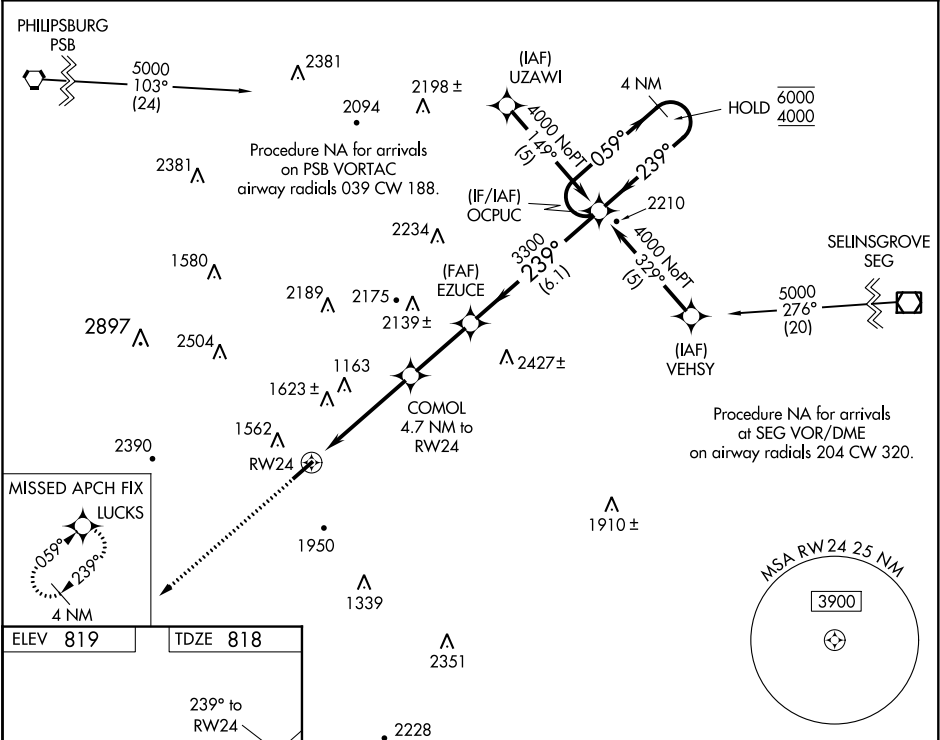
❄

-13°C

VDP NA when using State College altimeter setting. Rwy 24 helicopter visibility reduction below ¾ SM NA. Circling NA NW of Rwy 6-24. When local altimeter setting not received, use State College altimeter setting and increase LPV DA to 1602 feet and all MDAs 100 feet; increase LPV visibility all Cats to 2 ½ SM.

MISSED APPROACH:
Climb to 4000 direct LUCKS and hold.

AWOS-3PT 123.85	NEW YORK CENTER 134.8 338.3	UNICOM 122.7 (CTAF) 0
---------------------------	---------------------------------------	---------------------------------



*LNAV only.		*4.3 NM to RW24		3300		239°		059°		6000		4000	
RW24		COMOL 4.7 NM to RW24		EZUCE		OCPUC		4 NM Holding Pattern		GP 3.00° TCH 37			
CATEGORY		A		B		C		D					
LPV DA		1509-2		691 (700-2)						1509-2 ¼		691 (700-2 ¼)	
LNAV MDA		2220-1 ¼		2220-1 ½		2220-3		1402 (1500-3)					
CIRCLING		2220-1 ¼		2220-1 ½		2220-3		2360-3					
		1401 (1500-1 ¼)		1401 (1500-1 ½)		1401 (1500-3)		1541 (1600-3)					