

## RNAV (GPS)-B

APCH CRS	Rwy Idg	N/A
054°	TDZE	N/A
	Arpt Elev	487

AL-6422 (USA)

MUIR AAF (KMUI)

**T** Circling N of Rwy 7-25 not authorized.  
DME/DME RNP-0.3 NA

**A** Helicopter visibility reduction below 1 SM NA

**MISSED APPROACH:** Climbing right turn to 3100 direct BAARN and hold.

ASOS  
124.175

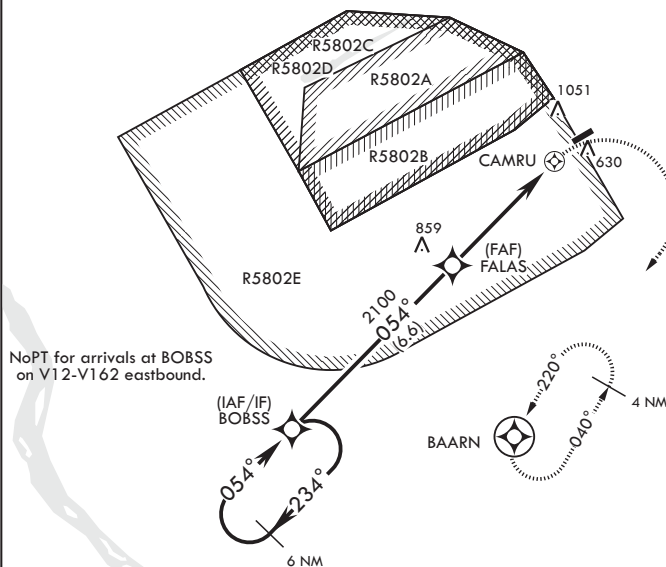
HARRISBURG APP CON/DEP CON  
118.25 269.45

TOWER★  
126.2 (CTAF) 0 290.5

GND CON  
121.625 269.525

When local altimeter setting not received, use Harrisburg Intl altimeter setting: increase all MDA 80 feet and CAT BC vis 1/4 SM.

1775



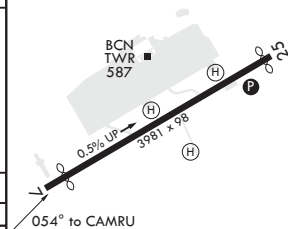
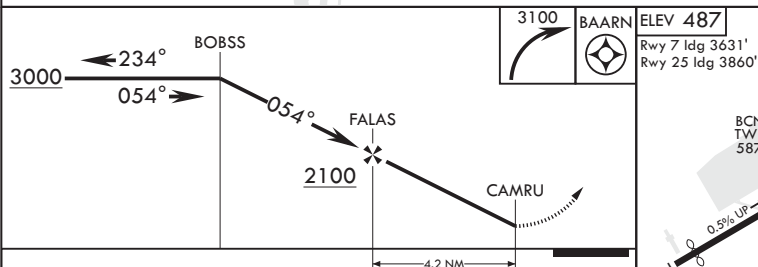
NoPT for arrivals at BOBSS  
on V12-V162 eastbound.


(IAF

BAARN

MSA CARRO 25 NM

3200

REIL all Rwys  
MIRL all Rwy

CATEGORY	A	B	C	D
 CIRCLING	1420-1¼	933 (1000-1¼)	1420-2¾ 933 (1000-2¾)	NA