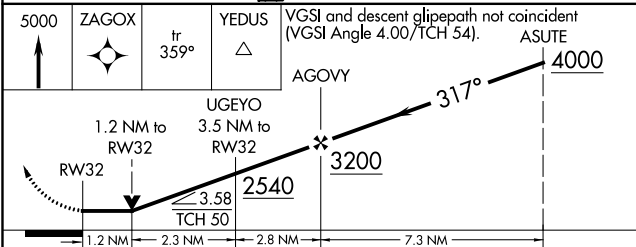
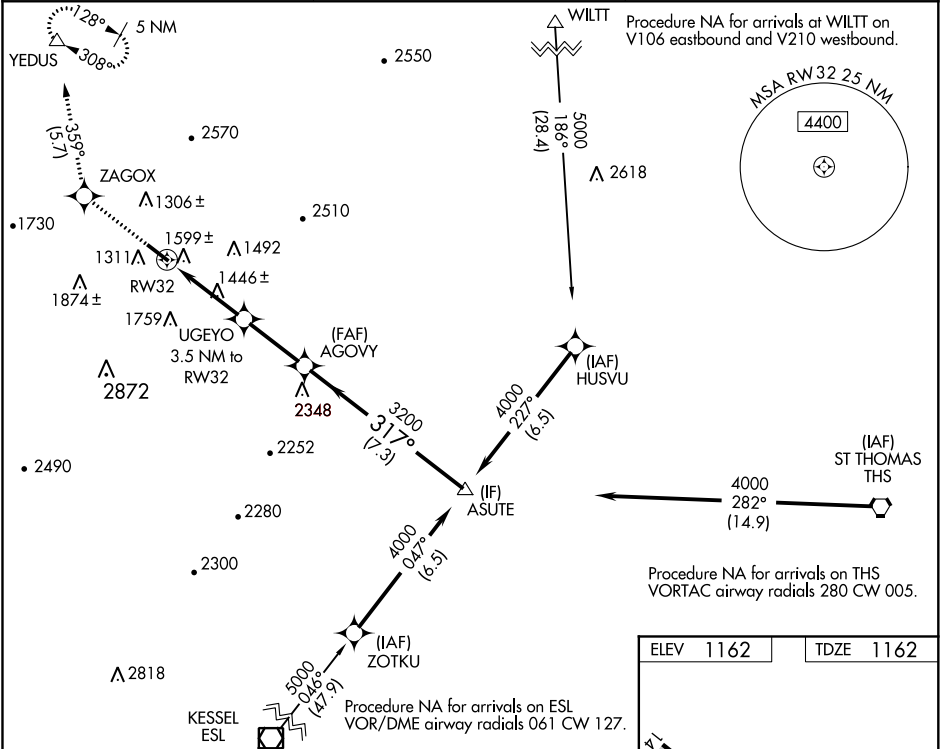


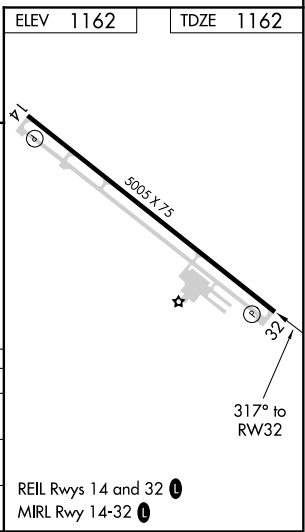
WAAS CH 90437 W32A	APP CRS 317°	Rwy Idg TDZE 1162 Apt Elev 1162	5005
--	------------------------	---	-------------

RNAV (GPS) RWY 32
BEDFORD COUNTY (HIMZ)

<div><div><div>▼</div><div>▲ NA</div></div><div></div></div> <div>DME/DME RNP-0.3 NA. VDP NA when using Altoona altimeter setting. When local altimeter setting not received, use Altoona altimeter setting and increase all MDA 100 feet. Increase LP Cat C visibility ¼ mile. Increase LNAV Cat B visibility ¼ mile and Cat C visibility ½ mile. Increase Circling Cats A and B visibility ¼ mile. Helicopter visibility reduction below ¾ SM NA.</div>	<div>MISSED APPROACH: Climb to 5000 direct ZAGOX and on track 359° to YEDUS and hold, continue climb-in-hold to 5000.</div>	
<div>AWOS-3 123.675</div>	<div>JOHNSTOWN APP CON ★ 121.2 299.2</div>	<div>UNICOM 122.7 (CTAF) 0</div>



CATEGORY	A	B	C	D
LP MDA	1740-1	578 (600-1)	1740-1½ 578 (600-1½)	NA
LNAV MDA	1860-1	698 (700-1)	1860-2 698 (700-2)	NA
CIRCLING	1900-1 738 (800-1)	1960-1 798 (800-1)	2200-3 1038 (1100-3)	NA



NE-4, 31 DEC 2020 to 28 JAN 2021

NE-4, 31 DEC 2020 to 28 JAN 2021