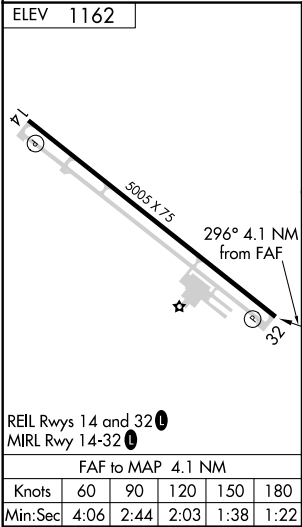
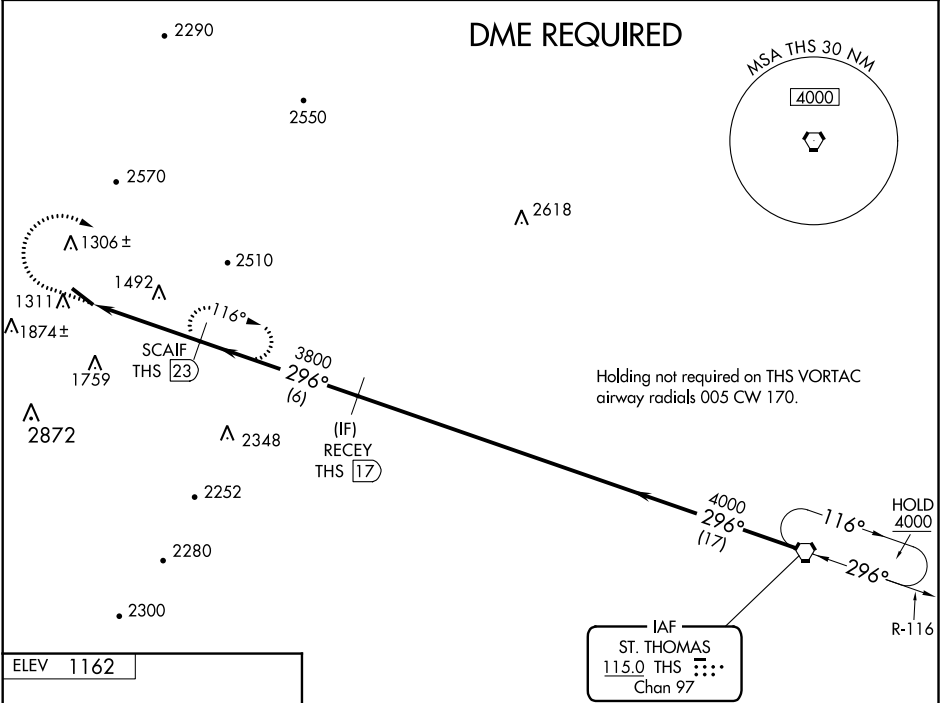


VORTAC THS	APP CRS	Rwy Idg	N/A
115.0	296°	TDZE	N/A
Chan 97		Apt Elev	1162

VOR-A
BEDFORD COUNTY (HMZ)

<p>V Helicopter visibility reduction below ¾ SM NA. A DME required.</p>	<p>MISSED APPROACH: Climb to 3200 then climbing right turn to 4000 on heading 150° and on THS VORTAC R-296 to SCAIF/23 DME and hold.</p>
-------------------------------------------------------------------------------------------	------------------------------------------------------------------------------------------------------------------------------------------

AWOS-3 123.675	JOHNSTOWN APP CON ★ 121.2 299.2	UNICOM 122.7 (CTAF) 0
--------------------------	-------------------------------------------	---------------------------------



3200	4000	THS R-296	SCAIF THS 23	RECEY THS 17	THS VORTAC
↑	hdg 150°				
THS 27.1	SCAIF THS 23	RECEY THS 17	THS VORTAC		
4.1 NM	6 NM	17 NM			
CATEGORY	A	B	C	D	
2700-1¼	2700-1½	2700-3	2940-3		
1538 (1600-1¼)	1538 (1600-1½)	1538 (1600-3)	1778 (1800-3)		
CIRCLING					

NE-4, 31 DEC 2020 to 28 JAN 2021

NE-4, 31 DEC 2020 to 28 JAN 2021