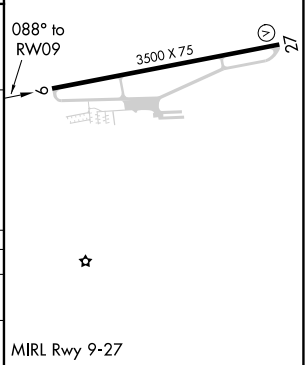
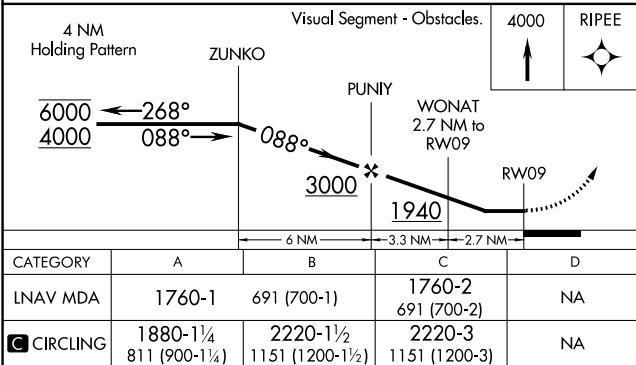
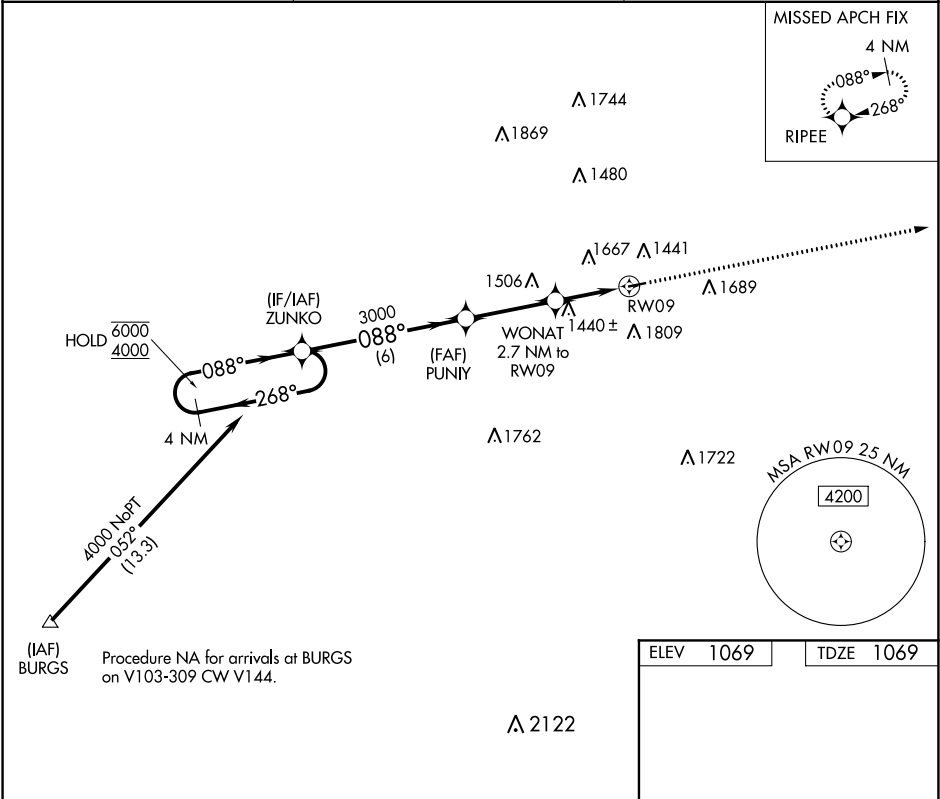


APP CRS	Rwy Idg	3500
088°	TDZE	1069
	Apt Elev	1069

RNAV (GPS) Z RWY 9  
GREENE COUNTY (WAY)

RNP APCH.	MISSED APPROACH: Climb to 4000 direct RIPEE and hold, continue climb-in-hold to 4000.
▼ NA	Circling Rwy 27 NA at night. Rwy 9 helicopter visibility reduction below 1 SM NA. Use Washington altimeter setting.

AFJ AWOS-3PT 119.175	CLARKSBURG APP CON★ 121.15 284.65	UNICOM 122.8 (CTAF) 0
-------------------------	--------------------------------------	--------------------------



WAYNESBURG, PENNSYLVANIA	GREENE COUNTY (WAY)
Amdt 1 26MAR20	39°54'N-80°08'W
	RNAV (GPS) Z RWY 9