

WAAS CH 93632	APP CRS 100°	Rwy Idg TDZE 928
W10A		Apt Elev 928

RNAV (GPS) RWY 10

BOGGS FIELD (USW)

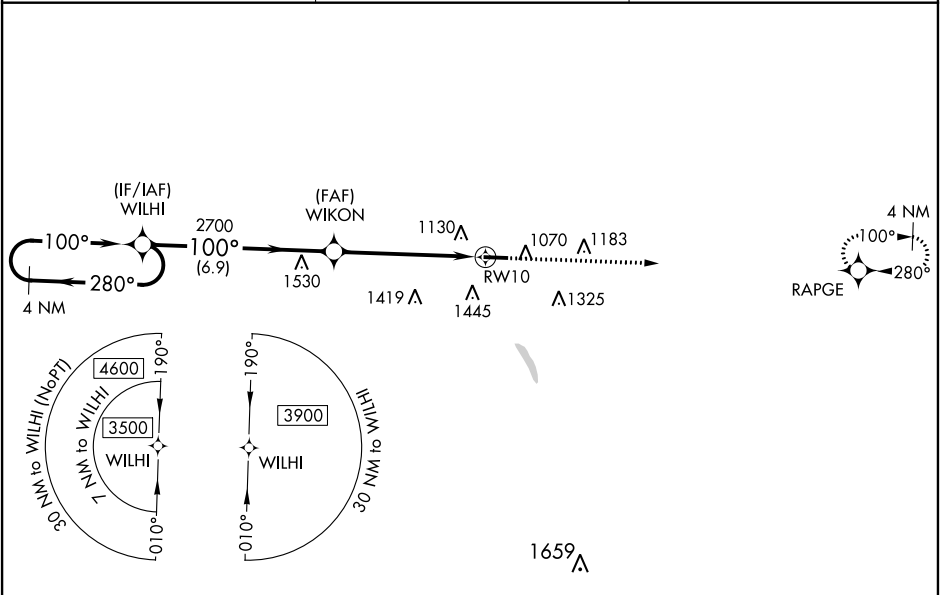
▼

▲ NA

Circling to Rwy 28 NA at night. Baro-VNAV NA when using Charleston altimeter setting. For uncompensated Baro-VNAV systems, LNAV/VNAV NA below -16°C (2°F) or above 54°C (130°F). When local altimeter setting not received, use Charleston altimeter setting and increase all DA 75 feet and all MDA 80 feet. Increase LPV all Cats visibility 1⁄8 mile, LNAV Cat B visibility 1⁄4 mile, Cat C/D visibility 1⁄2 mile and Circling Cat B/C/D visibility 1⁄4 mile. DME/DME RNP-0.3 NA. VDP NA with Charleston altimeter setting. Helicopter visibility reduction below 3⁄4 SM NA. Procedure NA at night.

MISSED APPROACH:
Climb to 3200 direct
RAPGE and hold.

AWOS-3 118.575	CHARLESTON APP CON 124.1 269.125	UNICOM 122.725 (CTAF) 0
--------------------------	--	-----------------------------------



ELEV 928	TDZE 928
-----------------	-----------------

4 NM Holding Pattern

WILHI

3200 RAPGE

100° to RWY 10

4549 X 75

28

3500

280°

100°

100°

2700

2700

WIKON

2 NM to RWY 10

* LNAV only

RWY 10

6.9 NM

3.4 NM

2 NM

GP 3.00° TCH 40°

3200

RAPGE

100° to RWY 10

4549 X 75

28

CATEGORY	A	B	C	D
LPV DA		1178-1	250 (300-1)	
LNAV/VNAV DA		1661-3	733 (800-3)	
LNAV MDA	1620-1	692 (700-1)	1620-2	692 (700-2)
CIRCLING	1620-1	692 (700-1)	1760-2½ 832 (900-2½)	1760-2¾ 832 (900-2¾)

MIRL Rwy 10-28 0