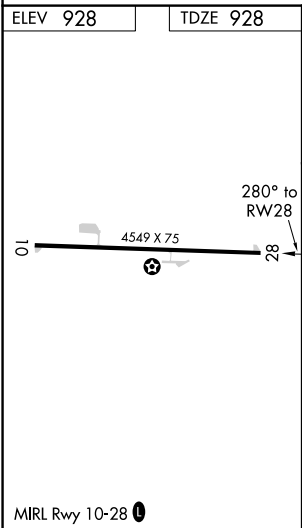
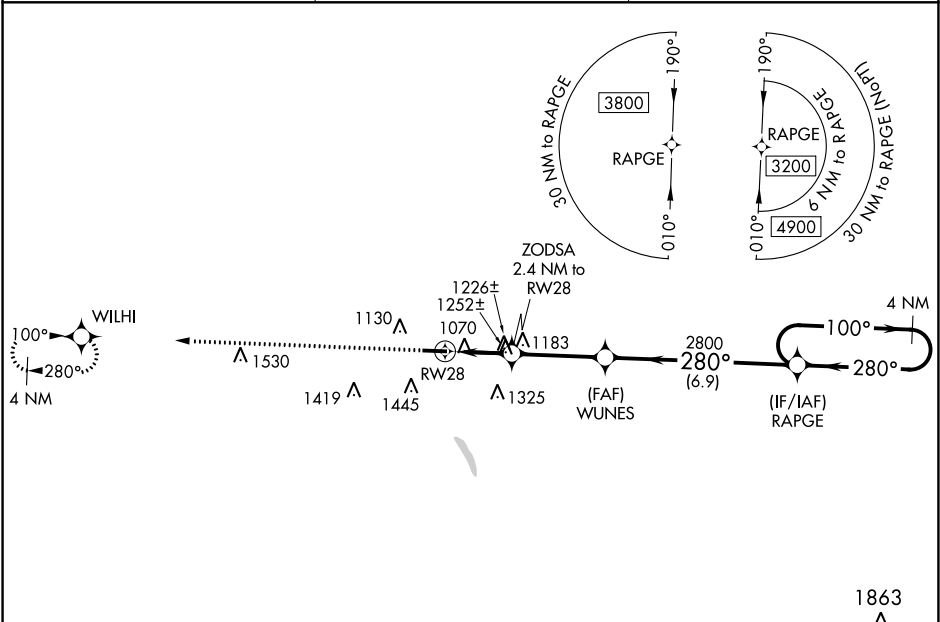


WAAS CH 62928 W28A	APP CRS 280°	Rwy Idg 4549 TDZE 928 Apt Elev 928
--	------------------------	---

RNAV (GPS) RWY 28

BOGGS FIELD (USW)

<div><div>▼</div><div>▲ NA</div></div> <div>DME/DME RNP-0.3 NA. Procedure NA at night. When local altimeter not received, use Charleston altimeter setting and increase all MDA 80 feet, LP and LNAV Cats C and D visibility ¼ mile and Circling Cats C and D visibility ¼ mile. Rwy 28 helicopter visibility reduction below 1 SM NA.</div>		MISSED APPROACH: Climb to 3500 direct WILHI and hold.
AWOS-3 118.575	CHARLESTON APP CON 124.1 269.125	UNICOM 122.725 (CTAF) 0



<p>3500 ↑</p> <p>WILHI</p> <p>Visual Segment - Obstacles.</p> <p>WUNES</p> <p>RAPGE</p> <p>4 NM Holding Pattern</p> <p>ZODSA 2.4 NM to RW28</p> <p>RW28</p> <p>1720</p> <p>2800</p> <p>3200</p> <p>100° →</p> <p>← 280°</p> <p>2.4 NM</p> <p>3.4 NM</p> <p>6.9 NM</p>				
CATEGORY	A	B	C	D
LP MDA	1480-1	552 (600-1)	1480-1 $\frac{5}{8}$	552 (600-1 $\frac{5}{8}$)
LNAV MDA	1520-1	592 (600-1)	1520-1 $\frac{3}{4}$	592 (600-1 $\frac{3}{4}$)
CIRCLING	1560-1 632 (700-1)	1600-1 672 (700-1)	1760-2 $\frac{1}{2}$ 832 (900-2 $\frac{1}{2}$)	1760-2 $\frac{3}{4}$ 832 (900-2 $\frac{3}{4}$)