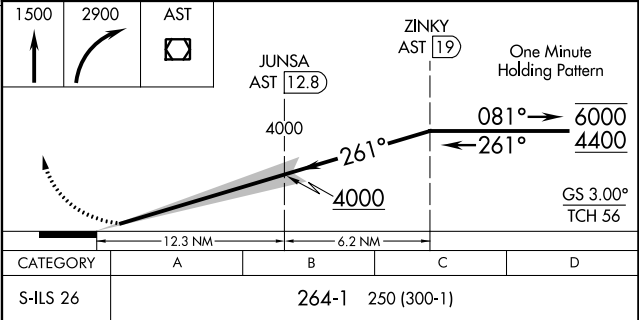
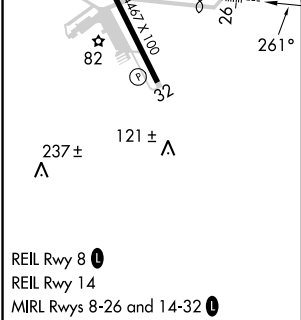
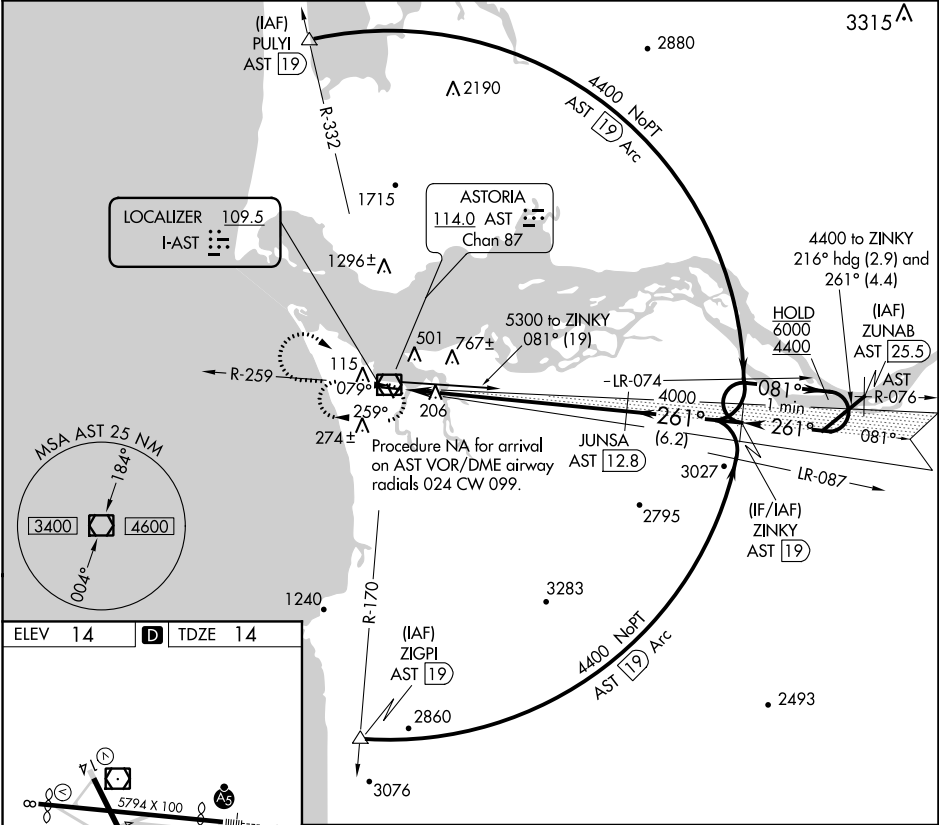


|           |         |          |      |
|-----------|---------|----------|------|
| LOC I-AST | APP CRS | Rwy Idg  | 4780 |
| 109.5     | 261°    | TDZE     | 14   |
|           |         | Apt Elev | 14   |

ILS RWY 26  
ASTORIA RGNL (AST)

|   |       |  |
|---|-------|--|
| DME required for procedure entry.   | MALSR | MISSED APPROACH: Climb to 1500 then climbing right turn to 2900 direct AST VOR/DME and hold. |
| Rwy 26 helicopter visibility reduction below 3/4 SM NA. Inoperative table does not apply. |       |  |

|                 |                               |                          |
|-----------------|-------------------------------|--------------------------|
| ASOS<br>135.375 | SEATTLE CENTER<br>124.2 317.6 | UNICOM<br>122.8 (CTAF) 0 |
|-----------------|-------------------------------|--------------------------|



NW-1, 31 DEC 2020 to 28 JAN 2021

NW-1, 31 DEC 2020 to 28 JAN 2021