


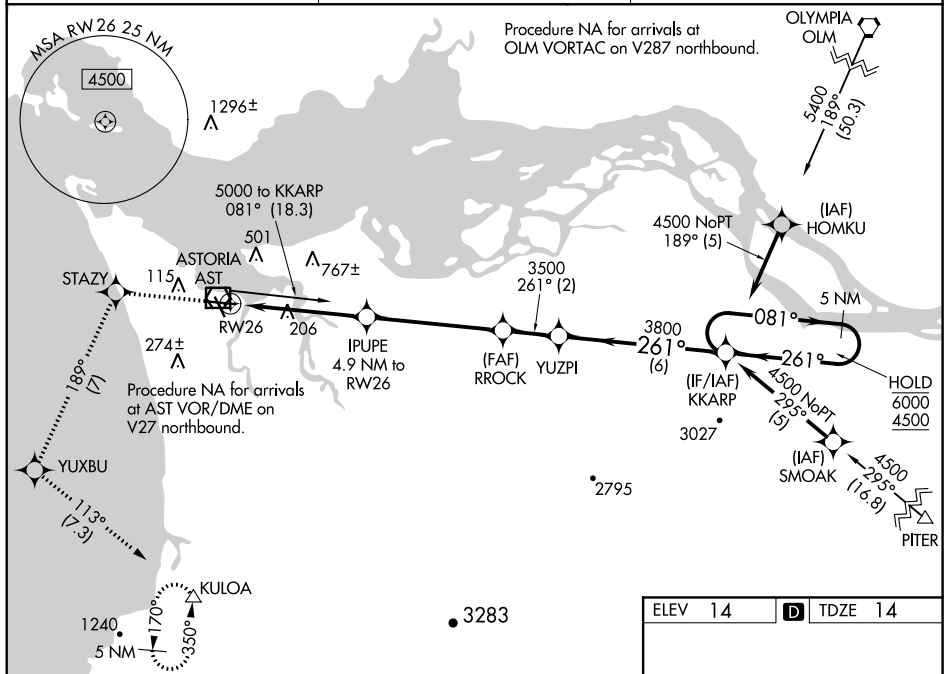


WAAS CH 97711 W26A	APP CRS 261°	Rwy Idg 4780 TDZE 14 Apt Elev 14
--	------------------------	---

RNAV (GPS) RWY 26
ASTORIA RGNL (AST)

RNP APCH.		<div>MALS R</div> <div></div>	MISSED APPROACH: (Do not exceed 210K until STAZY) Climb to 5000 direct STAZY and left turn on track 189° to YUXBU and left turn on track 113° to KULOA and hold, continue climb-in-hold to 5000.
<div> </div> <div>Inop table does not apply to LPV all Cats. Rwy 26 helicopter visibility reduction below ¾ SM NA. For inop ALS, increase LNAV Cat A/B visibility to 1 SM and Cat C/D to 2 ½ SM.</div>			
ASOS 135.375	SEATTLE CENTER 124.2 317.6	UNICOM 122.8 (CTAF) 0	



5000 ↑	STAZY ✧	YUXBU ✧	KULOLO △	KKARP 5 NM Holding Pattern
<p>* LNAV only</p>				
CATEGORY	A		B	C
LPV DA	264-3/4		250 (300-3/4)	
LNAV MDA	860-3/4	846 (900-3/4)	860-1 7/8	846 (900-1 7/8)
CIRCLING	860-1 1/4	846 (900-1 1/4)	1080-3 1066 (1100-3)	1160-3 1146 (1200-3)

