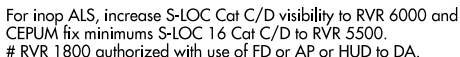
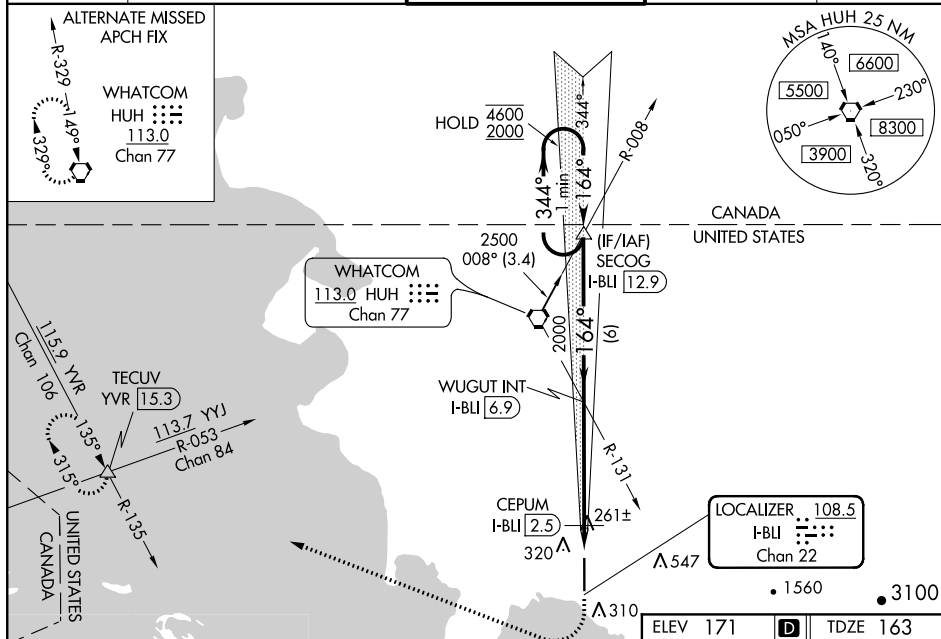


ILS or LOC RWY 16  
BELLINGHAM INTL (BLI)

**MISSED APPROACH:** Climb to 700 then climbing right turn to 2000 on heading 275° and on YVR VOR/DME R-135 to TECUV INT/YVR 15.3 DME and hold.



ATIS 134.45	VICTORIA TERMINAL APP CON 132.7 290.8	BELLINGHAM TOWER ★ 124.9 (CTAF) 379.3	GND CON 127.4 379.3	UNICOM 122.95
----------------	--	--	------------------------	------------------



One Minute Holding Pattern

SECOG I-BU [12.9]

WUGUT INT I-BU [6.9]

2000

4600 2000

344° 164°

GS 3.00° TCH 51

CEPUM I-BU [2.5]

I-BU [1.3]

\*LOC only

580

6 NM 4.4 NM 1.2 NM

CATEGORY	A	B	C	D
S-ILS 16 #	363/24 200 (200-½)			
S-LOC 16	580/24 417 (500-½)		580/40 417 (500-¾)	
CIRCLING	640-1 469 (500-1)		900-2 729 (800-2)	1160-3 989 (1000-3)

CEPUM FIX MINIMUMS (DME REQUIRED)

S-LOC 16	520/24 357 (400-½)	520/30 357 (400-⅝)
CIRCLING	640-1 469 (500-1)	900-2 729 (800-2) 1160-3 989 (1000-3)

REIL Rwy 34 1 34

HIRL Rwy 16-34 1

FAF to MAP 5.6 NM

Knots	60	90	120	150	180
Min:Sec	5:36	3:44	2:48	2:14	1:52