

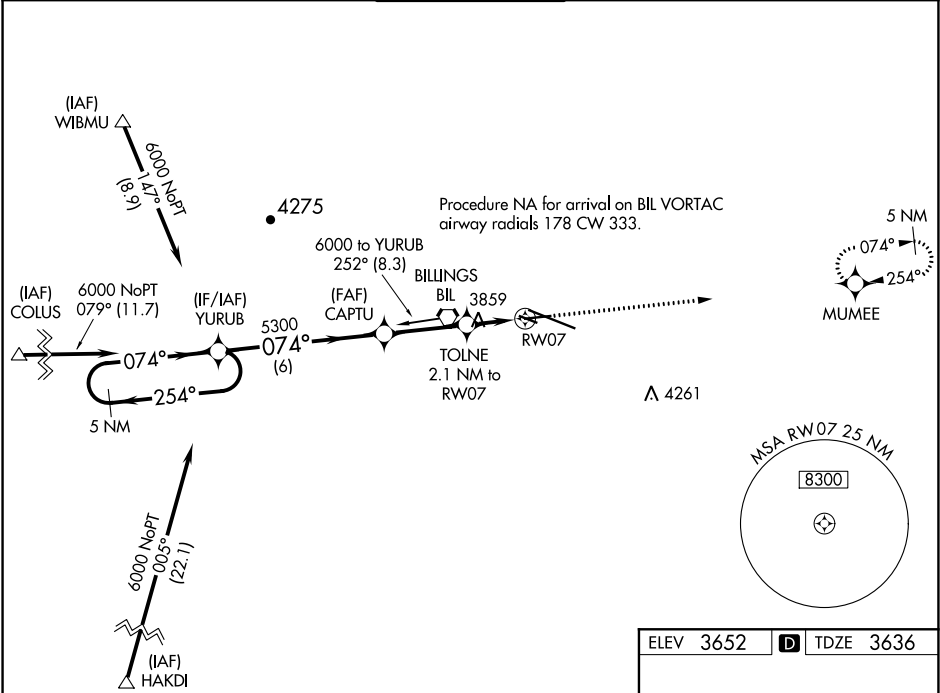
WAAS CH 87127 W07A	APP CRS 074°	Rwy Idg TDZE Apt Elev	5501 3636 3652
--	------------------------	-----------------------------	---

RNAV (GPS) RWY 7
BILLINGS LOGAN INTL (BIL)

⚠ For uncompensated Baro-VNAV systems, LNAV/VNAV NA below -25°C (-13°F) or above 53°C (127°F). Rwy 7 helicopter visibility reduction below ¾ SM NA. DME/DME RNP-0.3 NA.

MISSED APPROACH: Climb to 6000 direct MUMEE and hold.

ATIS 126.3	BILLINGS APP CON 120.5 284.6	BILLINGS TOWER 127.2 257.8	GND CON 121.9	CLNC DEL 121.9
----------------------	--	---	-------------------------	--------------------------



VGSI and RNAV glidepath not coincident (VGSI Angle 3.00°/TCH 31°).				
5 NM Holding Pattern				
6000 ← 254° / 074° →				
GP 3.00° TCH 45				
YURUB CAPTU 5300 TOLNE 2.1 NM to RW07 *4340 RW07				
6 NM 3 NM 0.7 NM 1.4 NM				
CATEGORY	A	B	C	D
LPV DA	3886-¾ 250 (300-¾)			
LNAV/VNAV DA	3950-1 314 (300-1)			
LNAV MDA	4120-1	484 (500-1)	4120-1¾	484 (500-1¾)
CIRCLING	4120-1 468 (500-1)	4160-1 508 (600-1)	4180-1½ 528 (600-1½)	4580-3 928 (1000-3)

ELEV 3652 TDZE 3636

Rwy 10R-10L: 3800 X 75
Rwy 7-25: 5501 X 75

074° to RW07

0.8% DOWN 1.9% UP 1.0% UP

3764 3707 288

REIL Rwys 25 and 28R
HIRL Rwy 10L-28R
MIRL Rwys 7-25 and 10R-28L

NW-1, 31 DEC 2020 to 28 JAN 2021

NW-1, 31 DEC 2020 to 28 JAN 2021