

WAAS CH <b>56222</b> <b>W28A</b>	APP CRS <b>282°</b>	Rwy Idg <b>10518</b> TDZE <b>3517</b> Apt Elev <b>3652</b>
--	------------------------	--

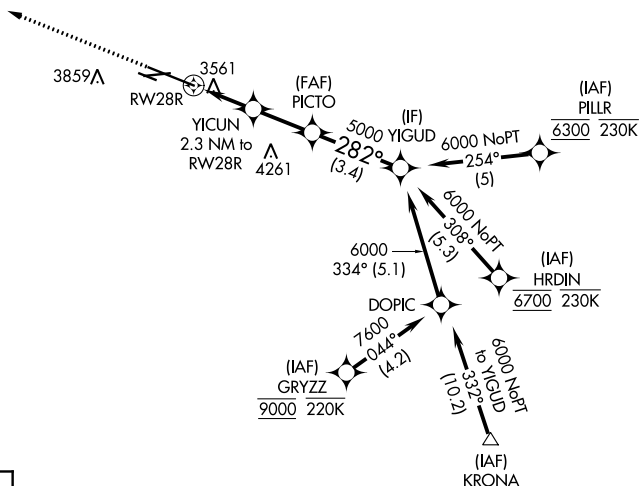
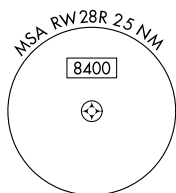
RNAV (GPS) Y RWY 28R  
BILLINGS LOGAN INTL (BIL)

**T  
A**

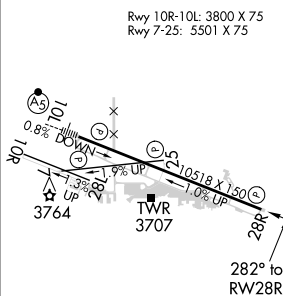
For uncompensated Baro-VNAV systems, LNAV/VNAV NA below -24°C (-11°F) or above 50°C (123°F). Rwy 28R helicopter visibility reduction below  $\frac{3}{4}$  SM NA. DME/DME RNP-0.3 NA.

**MISSED APPROACH:** Climb to 5900 direct WIBON and hold.

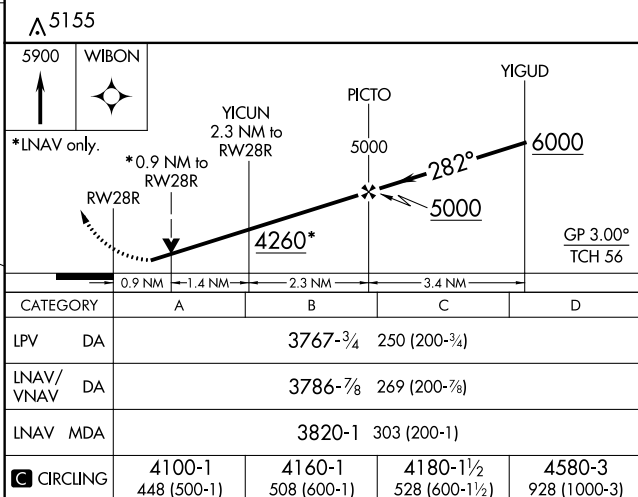
ATIS 126.3	BILLINGS APP CON 120.5 284.6	BILLINGS TOWER 127.2 257.8	GND CON 121.9	CLNC DEL 121.9
---------------	---------------------------------	-------------------------------	------------------	-------------------



ELEV 3652	<b>D</b>	TDZE 3517
-----------	----------	-----------



HIRL Rwy 10L-28R  
REIL Rwy 25 and 28R  
MIRL Rwy 7-25 and 10R-28L



## RNAV (GPS) Y RWY 28R