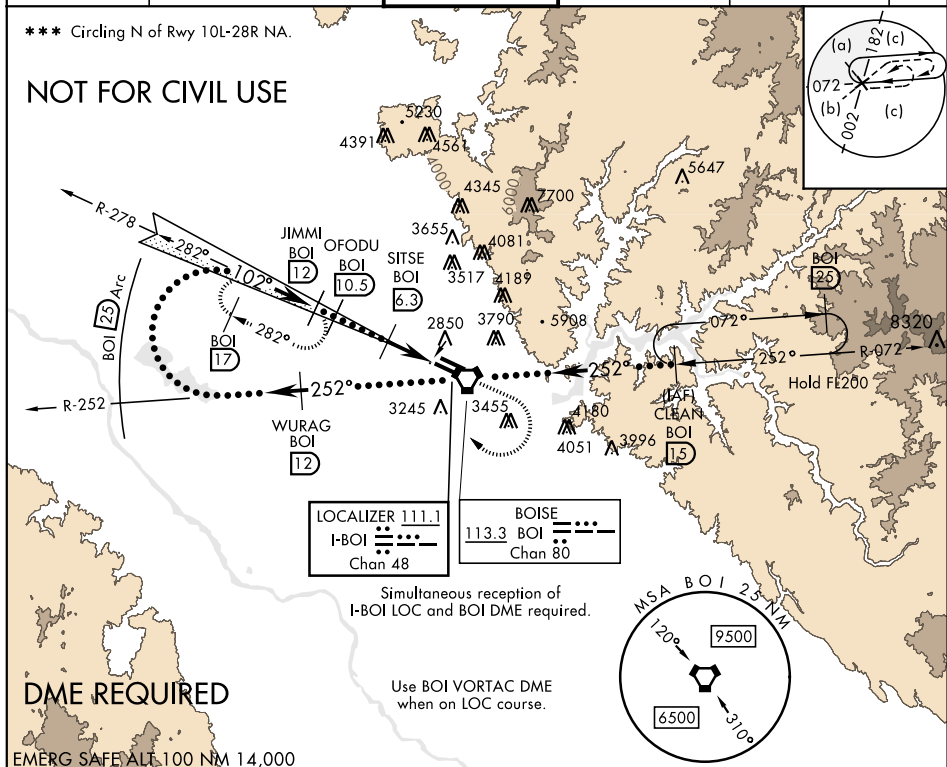


## HI-ILS Z or LOC Z RWY 10R

LOC I-BOI <b>111.1</b>	APCH CRS <b>102°</b>	Rwy ldg TDZE Arpt Elev <b>9763</b> <b>2836</b> <b>2871</b>	JAL-57 [USAF]	BOISE AIR TERMINAL (GOWEN FLD)	(KBOI)
<b>★</b> When ALS inop, increase RVR to 40 and vis to ¾ mile. <b>★★</b> When ALS inop, increase RVR to 55 and vis to 1½ miles.			ALSF-2	<b>MISSED APPROACH:</b> Climb to 3700 then climbing right turn to 5000 on heading 320° and BOI VORTAC R-278 to JIMMI BOI 12 DME and hold.	
ATIS <b>123.9 290.4</b>	BIG SKY APP CON <b>119.6 269.4</b>	BOISE TOWER <b>118.1 257.8</b>	GND CON <b>121.7 348.6</b>	CLNC DEL <b>125.9 323.2</b>	ASOS

\*\*\* Circling N of Rwy 10L-28R NA.

NOT FOR CIVIL USE



EMERG SAFE ALT 100 NM 14,000

3700	5000	JIMMI BOI 12	WURAG BOI R-252 12	VGSI and ILS glidepath not coincident (VGSI angle 3.00%/55)	CLEAN R-072 BOI 15	ELEV 2871	TDZE 2836
Right at 12,000 remain within 25 NM of BOI VORTAC	102°	252°	FL200	252°	VORTAC	252°	FL200
GS 3.00° TCH 58	5900	5500	4100	4028	AVVUV BOI 2.7	2887	2897
3.6 NM	0.3						
CATEGORY	C			D		E	
S-ILS 10R *		3036/18	200	(200-½)			
S-LOC 10R **		3180/30	344	(400-¾)			
*** CIRCLING	3740-2½ 869 (900-2½)	3820-3	949	(1000-3)			
TDZL/CL Rwy 10R-28L HIRL Rwy 10L-28R, 10R-28L REIL Rwy 10L							

## HI-ILS Z or LOC Z RWY 10R