

BOISE, IDAHO

VORTAC BOI
113.3
Chgn 80

APCH CRS
278°

Rwy Idg	28L	9763	28R	10,000
TDZE	28L	2858	28R	2871
Arpt Elev	2871			

HI-VOR/DME or TACAN RWY 28L

JAL-57 [USAF]

BOISE AIR TERMINAL (GOWEN FLD) (KBOI)

T * When ALS inop, increase CAT C vis to 1½ miles,
CAT DE vis to 1¾ miles.
** Circling N of Rwy 10L-28R NA.

MALSR

MISSED APPROACH: Climb to 4500 via BOI VORTAC R-278 to JIMM and hold.

ATIS
123.9 290.4

BIG SKY APP CON
119.6 269.4


BOISE TOWER
118.1 257.8

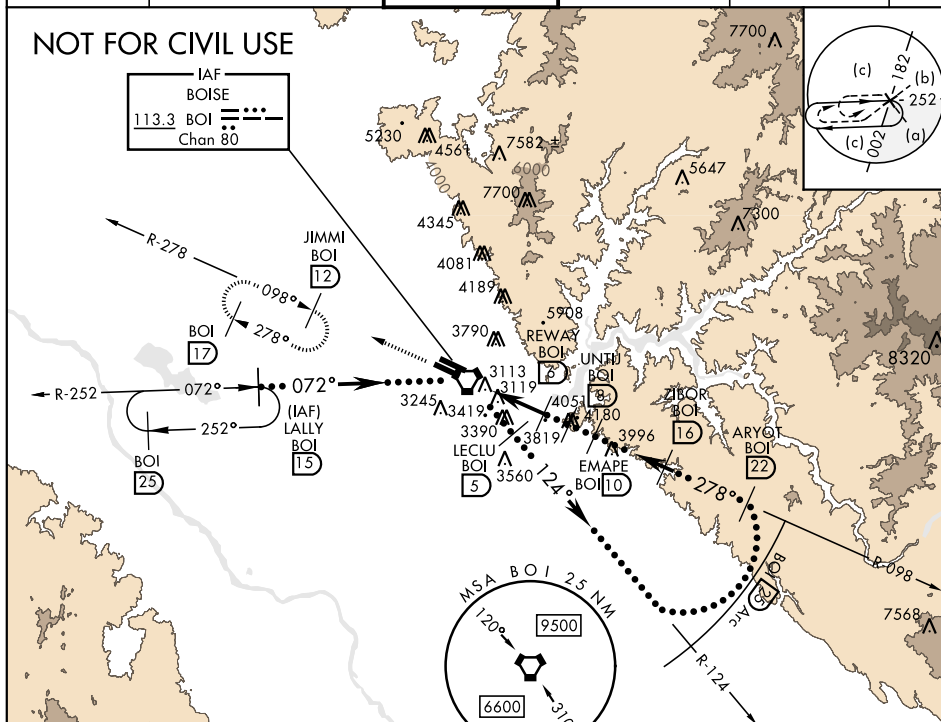
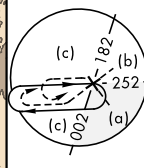
GND CON
121.7 348.6

CLNC DEL
125.9 323.2

ASOS

NOT FOR CIVIL USE

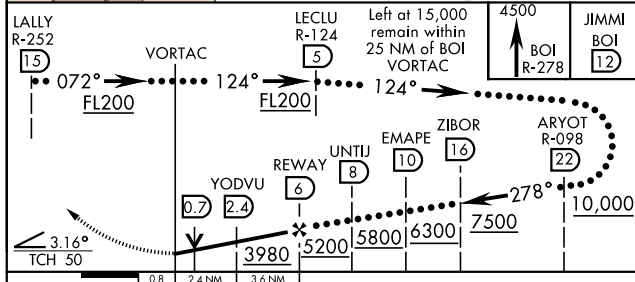
IAF
BOISE
113.3 BOI 
Chan 80



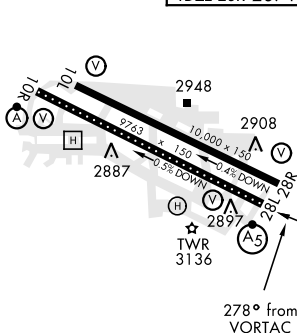
EMERG SAFE ALT 100 NM 14,100

ELEV 2871

TDZE 28L	2858
TDZE 28R	2871



CATEGORY	C	D	E
S-28L *	3380/50 522 (600-1)	3380/60	522 (600-1¼)
SIDESTEP RWY 28R	3380-1¼ 509 (600-1¾)	3380-2¼	509 (600-2¼)
CIRCLING **	3440-1½ 549 (600-1½)	3440-2 549 (600-2)	3820-3 949 (1000-3)



TDZL/CL Rwy 10R-28L
HIRL Rwy 10L-28R, 10R-28L
REIL Rwy 10L

BOISE, IDAHO

43°34'N-116°13'W

BOISE AIR TERMINAL (GOWEN FLD) (KBOI)

Amdt 3 07MAR13

HI-VOR/DME or TACAN RWY 28L