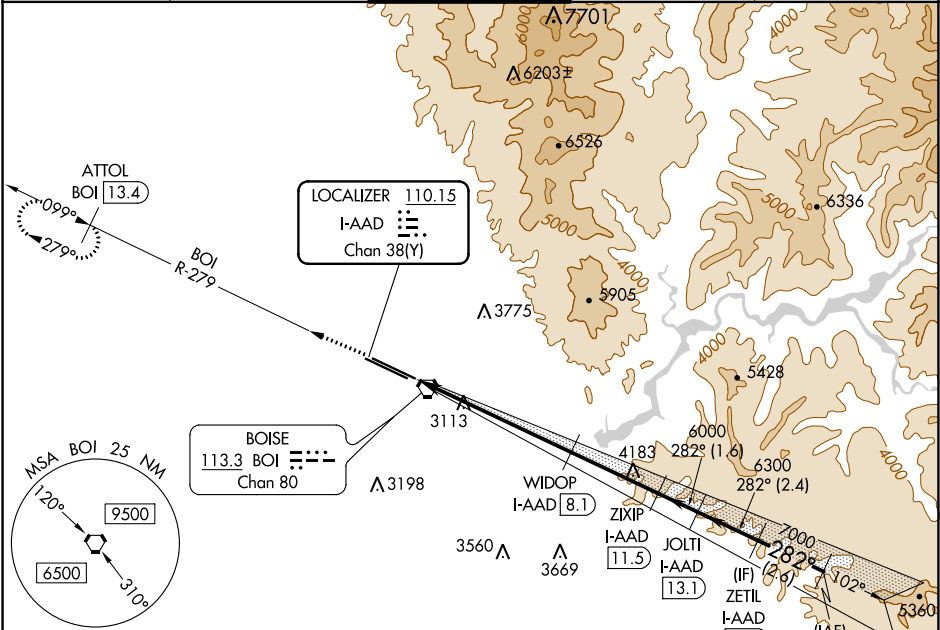


LOC/DME I-AAD <b>110.15</b> Chan <b>38</b> (Y)	APP CRS <b>282°</b>	Rwy ldg <b>10000</b> TDZE <b>2871</b> Apt Elev <b>2871</b>
--	------------------------	--

ILS or LOC RWY 28R  
BOISE AIR TERMINAL/GOWEN FIELD (BOI)

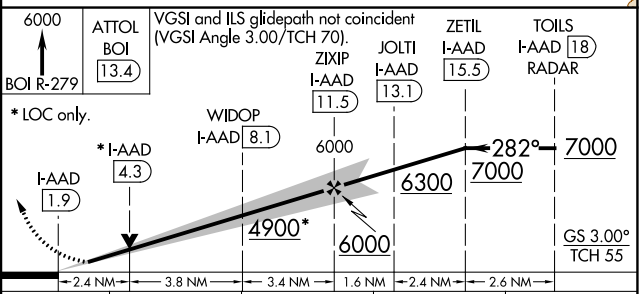
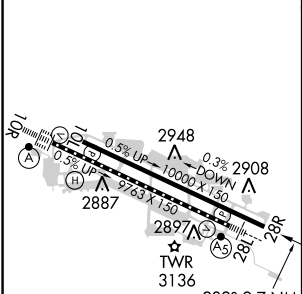
<b>⚠</b> Circling NA north of Rwy 10L-28R. DME required.	MISSED APPROACH: Climb to 6000 on BOI VORTAC R-279 to ATTOL/BOI 13.4 DME and hold.
--	---

D-ATIS <b>123.9 290.4</b>	BIG SKY APP CON <b>119.6 269.4</b>	BOISE TOWER <b>118.1 257.8</b>	GND CON <b>121.7 348.6</b>	CLNC DEL <b>125.9 323.2</b>
------------------------------	---------------------------------------	-----------------------------------	-------------------------------	--------------------------------



ELEV <b>2871</b>	<b>D</b>	TDZE <b>2871</b>
------------------	----------	------------------

RADAR and DME REQUIRED



CATEGORY	A	B	C	D
S-ILS 28R	3121-¾ 250 (300-¾)			
S-LOC 28R	3700-1 829 (900-1)	3700-1¼ 829 (900-1¼)	3700-2½ 829 (900-2½)	
<b>C</b> CIRCLING	3700-1¼ 829 (900-1¼)		3740-2½ 869 (900-2½)	3820-3 949 (1000-3)