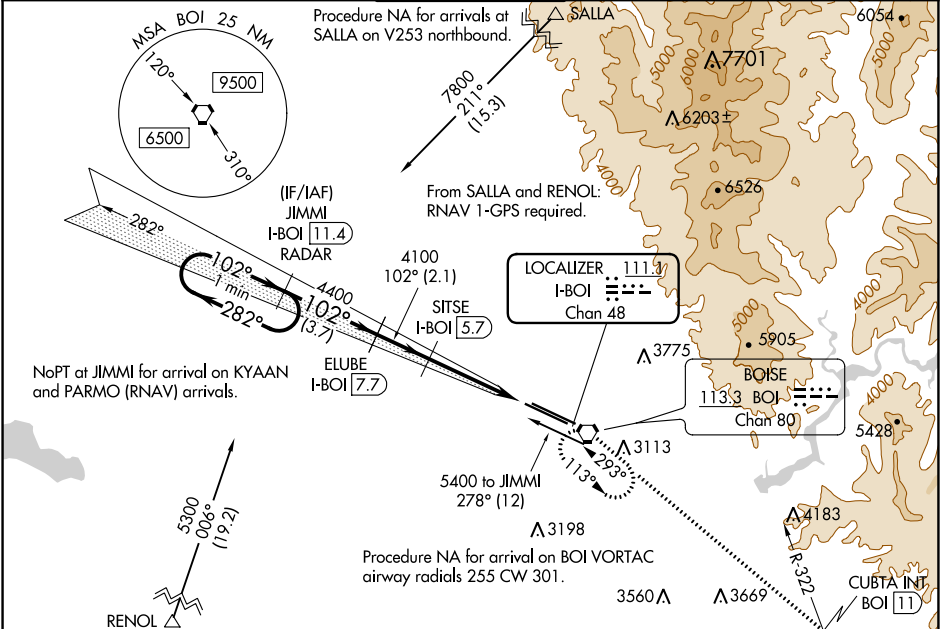


LOC/DME I-BOI	APP CRS	Rwy Idg	10R	10L
111.1	102°	TDZE	9763	10000
Chan 48		Apt Elev	2836	2844
			2871	2871

ILS Y or LOC Y RWY 10R
BOISE AIR TERMINAL/GOWEN FIELD (BOI)

⚠ ⚠	Circling NA north of Rwy 10L-28R. DME required. For inop ALS, increase S-LOC 10R Cats C/D visibility to RVR 5500.	ALSF-2 Rwy 10R 	MISSED APPROACH: Climb to 6000 on BOI VORTAC R-113 to CUBTA INT/BOI VORTAC 11 DME and right turn direct BOI VORTAC and hold.
----------------------	--	-----------------------	--

D-ATIS 123.9 290.4	BIG SKY APP CON 119.6 269.4	BOISE TOWER 118.1 257.8	GND CON 121.7 348.6	CLNC DEL 125.9 323.2
------------------------------	---------------------------------------	-----------------------------------	-------------------------------	--------------------------------



ELEV 2871	D	TDZE 10R 2836
		TDZE 10L 2844

RADAR or DME REQUIRED

