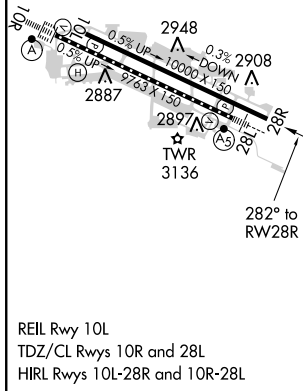
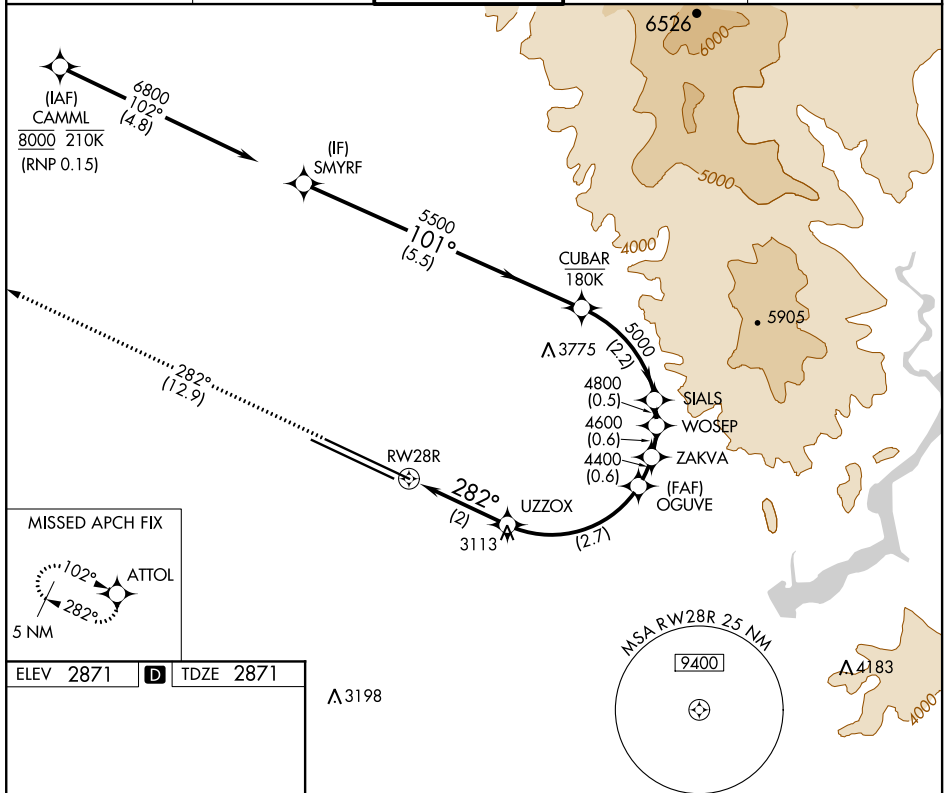

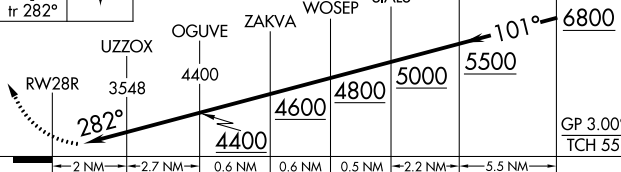


RNAV (RNP) X RWY 28R
BOISE AIR TERMINAL/GOWEN FIELD (BOI)

MISSED APPROACH: Climb to 6000 on track 282° to ATTOL and hold.

D-ATIS 123.9 290.4	BIG SKY APP CON 119.6 269.4	BOISE TOWER 118.1 257.8	GND CON 121.7 348.6	CLNC DEL 125.9 323.2
-----------------------	--------------------------------	----------------------------	------------------------	-------------------------



6000 ↑ fr 282°	ATTOL 	VGSI and RNAV glidepath not coincident (VGSI Angle 3.00°/TCH 70).									
											
CATEGORY		A		B		C		D			
RNP 0.15 DA		3288-1 $\frac{3}{8}$ 417 (500-1 $\frac{3}{8}$)									
AUTHORIZATION REQUIRED											

BOISE AIR TERMINAL/GOWEN FIELD (BOI)
43°34'N-116°13'W RNAV (RNP) X RWY 28R

NW-1, 31 DEC 2020 to 28 JAN 2021