

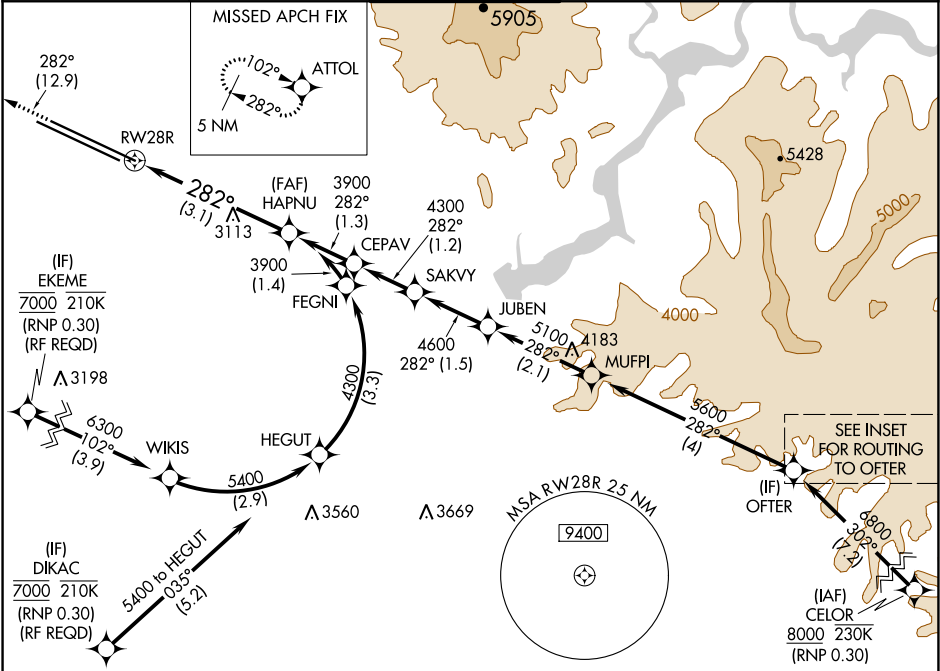
APP CRS	Rwy Idg	10000
282°	TDZE	2872
	Apt Elev	2872

RNAV (RNP) Z RWY 28R

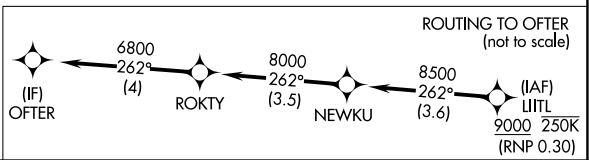
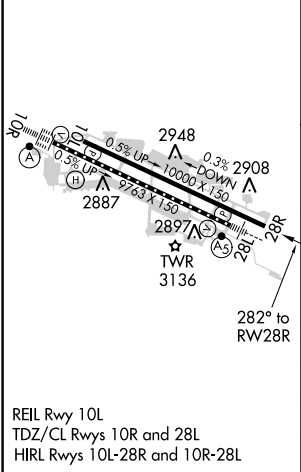
BOISE AIR TERMINAL/GOWEN FIELD (BOI)


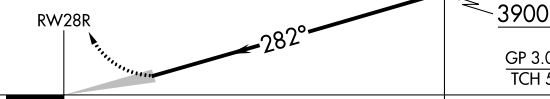
RNP AR APCH.	MISSED APPROACH: Climb to 6000 on track 282° to ATTOL and hold, continue climb-in-hold to 6000.
▼ For uncompensated Baro-VNAV systems, procedure NA below -15°C or above 54°C.	

D-ATIS 123.9 290.4	BIG SKY APP CON 119.6 269.4	BOISE TOWER 118.1 257.8	GND CON 121.7 348.6	CLNC DEL 125.9 323.2
-----------------------	--------------------------------	----------------------------	------------------------	-------------------------



ELEV 2872	D	TDZE 2872
-----------	---	-----------



6000 ↑ tr 282°	ATTOL 	VGSI and RNAV glidepath not coincident (VGSI Angle 3.00/TCH 70). See planview for multiple IF locations.	HAPNU 3900	
				
CATEGORY	A	B	C	D
RNP 0.15 DA	3204-1 332 (400-1)			
RNP 0.30 DA	3303-1¼ 431 (500-1¼)			
AUTHORIZATION REQUIRED				

AUTHORIZATION REQUIRED