

WAAS CH 78102 W10A	APP CRS 102°	Rwy Idg 10000 TDZE 2844 Apt Elev 2872
--	------------------------	--

RNAV (GPS) Y RWY 10L
BOISE AIR TERMINAL/GOWEN FIELD (BOI)

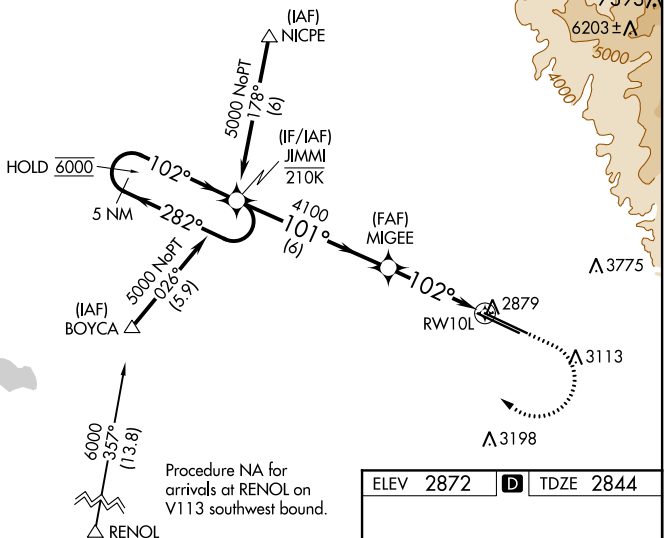
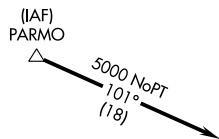
RNP APCH.

T Circling NA north of Rwy 10L-28R.
A For uncompensated Baro-VNAV systems, LNAV/VNAV NA below -12°C or above 54°C.

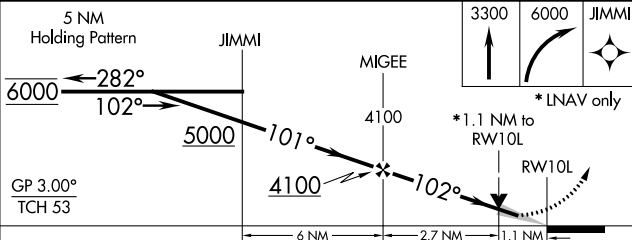
MISSED APPROACH: Climb to 3300 then climbing right turn to 6000 direct JIMMI and hold, continue climb-in-hold to 6000.


D-ATIS 123.9 290.4	BIG SKY APP CON 119.6 269.4	BOISE TOWER 118.1 257.8	GND CON 121.7 348.6	CLNC DEL 125.9 323.2
-----------------------	--------------------------------	----------------------------	------------------------	-------------------------

Procedure NA for arrivals at PARMO
on V500 northwest bound.



Procedure NA for arrivals at RENOL on V113 southwest bound.



CATEGORY	A	B	C	D
LPV DA	3094-7/8 250 (300-7/8)			
LNAV/ VNAV DA	3135-1 291 (300-1)			
LNAV MDA	3240-1 396 (400-1)		3240-1 1/8 396 (400-1 1/8)	
 CIRCLING	3440-1 568 (600-1)		3740-2 1/2 868 (900-2 1/2)	3820-3 948 (1000-3)

