

WAAS CH 40203 W10B	APP CRS 102°	Rwy Idg 9763 TDZE 2836 Apt Elev 2871
--	------------------------	---

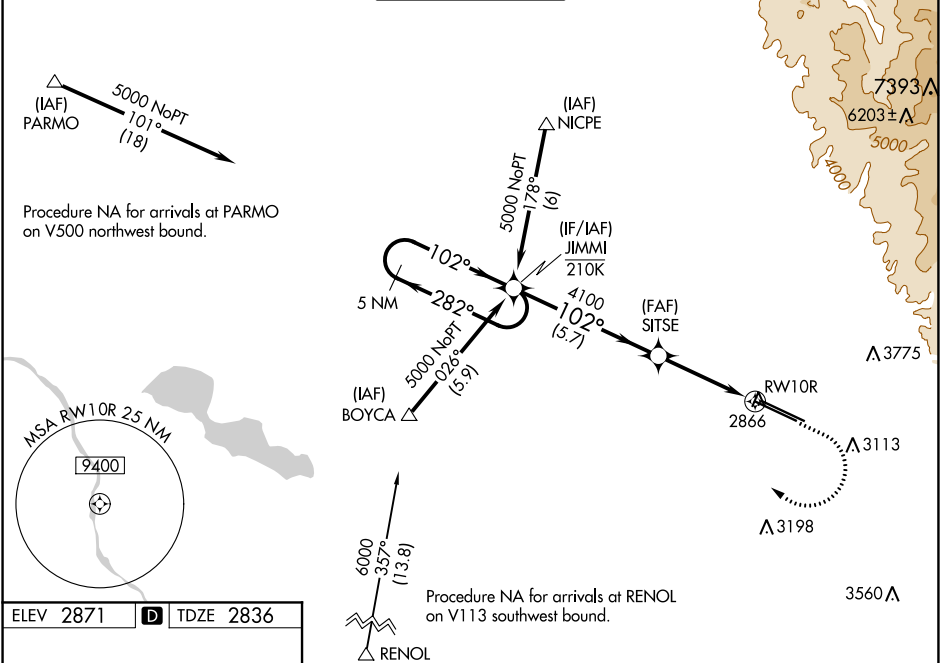
RNAV (GPS) Y RWY 10R
BOISE AIR TERMINAL/GOWEN FIELD (BOI)

⚠ For uncompensated Baro-VNAV systems, LNAV/VNAV NA below -12°C (11°F) or above 54°C (130°F). DME/DME RNP-0.3 NA. Circling NA north of Rwy 10L-28R. For inop ALS, increase LPV Cat E visibility to RVR 4000, LNAV/VNAV all Cats and LNAV Cats C/D/E visibility to RVR 6000.

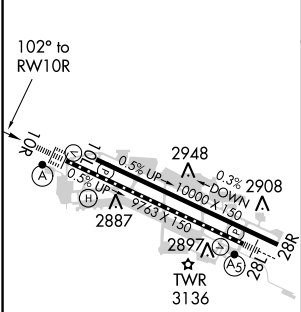
ALS-F-2

MISSED APPROACH: Climb to 3300 then climbing right turn to 6000 direct JIMMI and hold, continue climb-in-hold to 6000.

D-ATIS 123.9 290.4	BIG SKY APP CON 119.6 269.4	BOISE TOWER 118.1 257.8	GND CON 121.7 348.6	CLNC DEL 125.9 323.2
------------------------------	---------------------------------------	--	-------------------------------	--------------------------------



ELEV 2871	D	TDZE 2836
-----------	----------	-----------



REIL Rwy 10L
TDZ/CL Rws 10R and 28L
HIRL Rws 10L-28R and 10R-28L

5 NM Holding Pattern		VGSI and RNAV glidepath not coincident (VGSI Angle 3.00/TCH 64).		3300	6000	JIMMI
GP 3.00° TCH 58		SITSE		* LNAV only		
6000		5000		* 1.1 NM to RWY 10R		
282°		102°		RWY 10R		
102°		4100		1.1 NM		
5.7 NM		2.7 NM				
CATEGORY	A	B	C	D	E	
LPV DA	3036/18 200 (200-½)					
LNAV/VNAV DA	3182/40 346 (400-¾)					
LNAV MDA	3240/24 404 (400-½)		3240/40 404 (400-¾)			
C CIRCLING	3440-1 569 (600-1)		3740-2½ 869 (900-2½)		3820-3 949 (1000-3)	
					3880-3 1009 (1100-3)	

NW-1, 31 DEC 2020 to 28 JAN 2021

NW-1, 31 DEC 2020 to 28 JAN 2021