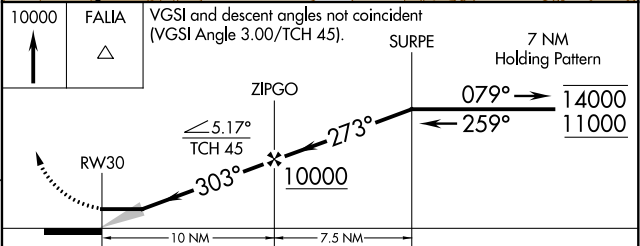
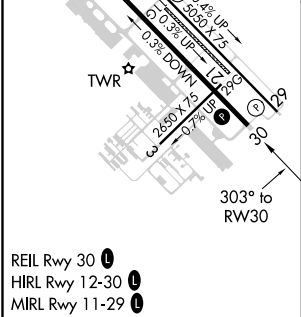
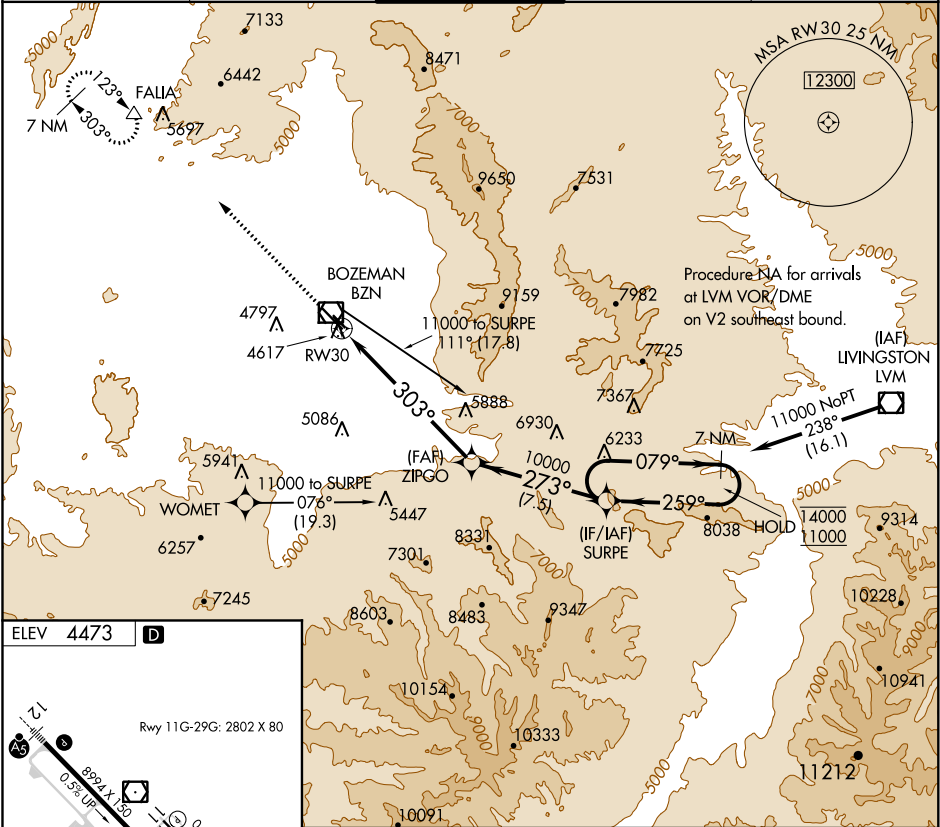


APP CRS	Rwy Idg	N/A
303°	TDZE	N/A
	Apt Elev	4473

RNAV (GPS)-A  
BOZEMAN YELLOWSTONE INTL (BZN)

RNP APCH.	MISSED APPROACH: Climb to 10000 direct FALIA and hold, continue climb-in-hold to 10000.
Circling NA to Rwys 3-21 and 11-29.	
-31°C	

ATIS 135.425	BIG SKY APP CON ★ 118.975 226.675	BOZEMAN TOWER ★ 118.2 (CTAF) 0	GND CON 121.8	UNICOM 122.95
-----------------	--------------------------------------	-----------------------------------	------------------	------------------



REIL Rwy 30	HIRL Rwy 12-30	MIRL Rwy 11-29
0	0	0

NW-1, 31 DEC 2020 to 28 JAN 2021

NW-1, 31 DEC 2020 to 28 JAN 2021