

APP CRS  
303°

Rwy Idg  
TDZE  
Apt Elev

8994  
4462  
4473

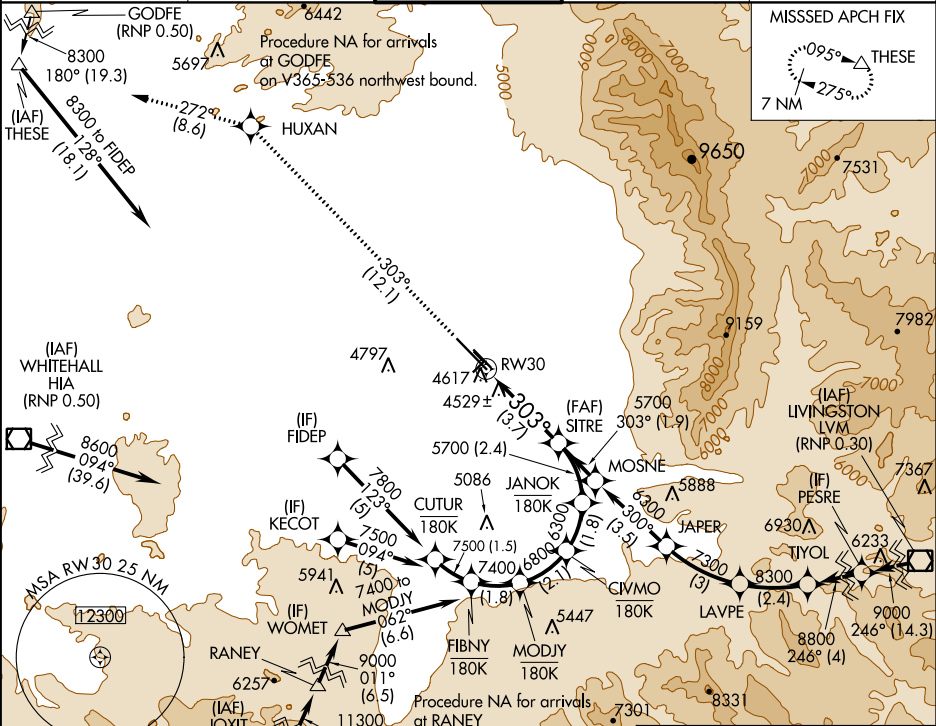
RNAV (RNP) RWY 30

BOZEMAN YELLOWSTONE INTL (BZN)

For uncompensated Baro-VNAV systems, procedure NA below -24°C (-11°F) or above 51°C (124°F). When VGSI inoperative, procedure NA at night. RF Required. GPS required. \*Missed approach requires minimum climb of 350 feet per NM to 6000.

MISSED APPROACH: Climb to 8300 on track 303° to HUXAN and on track 272° to THESE and hold, continue climb-in-hold to 8300.

ATIS 135.425	BIG SKY APP CON ★ 118.975 226.675	BOZEMAN TOWER★ 118.2 (CTAF) 0	GND CON 121.8	UNICOM 122.95
-----------------	--------------------------------------	----------------------------------	------------------	------------------



ELEV 8300	HUXAN	tr 303°	THESE	tr 272°	ELEV 4473	TDZE 4462
-----------	-------	---------	-------	---------	-----------	-----------

See planview for multiple IF locations.

RW30

303°

5700

GP 3.00°  
TCH 45

CATEGORY	A	B	C	D
RNP 0.11* DA		4742-1	280 (300-1)	
RNP 0.20 DA		4824-1 ¼	362 (400-1 ¼)	
RNP 0.30 DA		4881-1 ½	419 (500-1 ½)	

AUTHORIZATION REQUIRED

Rwy 11G-29G: 2802 X 80

8994 X 130

0.3% UP

0.4% UP

0.2% UP

0.3% DOWN

0.7% UP

2650 X 75

TWR

REIL Rwy 30

HIRL Rwy 12-30

MIRL Rwy 11-29

303° to RW30