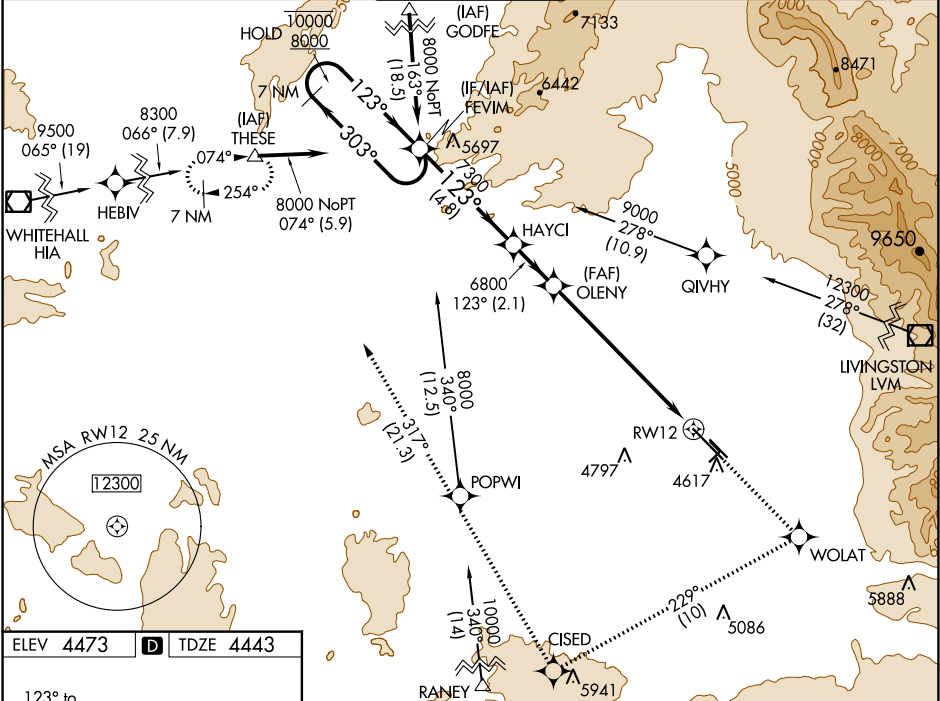


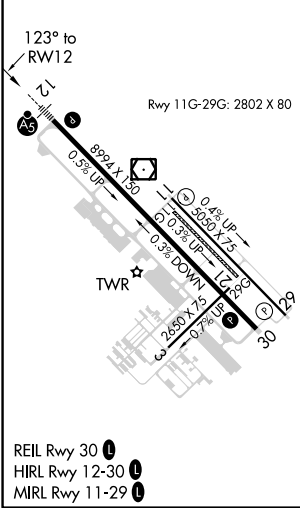
WAAS CH <b>72816</b> <b>W12A</b>	APP CRS <b>123°</b>	Rwy Idg TDZE Apt Elev	<b>8994</b> <b>4443</b> <b>4473</b>
--	------------------------	-----------------------------	---

**RNAV (GPS) Y RWY 12**  
BOZEMAN YELLOWSTONE INTL (BZN)

RNP APCH.			MALSR	MISSED APPROACH: Climb to 8300 direct WOLAT and right turn on track 229° to CISED and on track 317° to THESE and hold.
Circling NA to Rws 3-21 and 11-29. For uncompensated Baro-VNAV systems, procedure NA below -23°C or above 49°C. For inop ALS, increase -31°C LNAV/VNAV visibility to 1½ SM and LNAV visibility Cats C and D to 1½ SM.			AS	
ATIS <b>135.425</b>	BIG SKY APP CON ★ <b>118.975 226.675</b>	BOZEMAN TOWER ★ <b>118.2 (CTAF) 0</b>	GND CON <b>121.8</b>	UNICOM <b>122.95</b>



ELEV 4473	D	TDZE 4443
-----------	---	-----------



7 NM Holding Pattern		8300	WOLAT	CISED	THESE
10000 ← 303°		HAYCI	OLENY	* LNAV only	
8000 → 123°		6800	6800	* 1.5 NM to RWY 12	
GP 3.00°		4.8 NM	2.1 NM	5.7 NM	1.5 NM
TCH 53		RWY 12			
CATEGORY	A	B	C	D	
LPV DA	4693-½		250 (300-½)		
LNAV/VNAV DA	5094-1¾		651 (700-1¾)		
LNAV MDA	4960-½	517 (500-½)	4960-1	517 (500-1)	4960-1¼
CIRCLING	4960-1	487 (500-1)	5160-2	5360-3	887 (900-3)

NW-1, 31 DEC 2020 to 28 JAN 2021

NW-1, 31 DEC 2020 to 28 JAN 2021