

| | | | |
|-------------|---------|----------|------|
| VOR/DME BYI | APP CRS | Rwy Idg | N/A |
| 114.1 | 100° | TDZE | N/A |
| Chan 88 | | Apt Elev | 4154 |

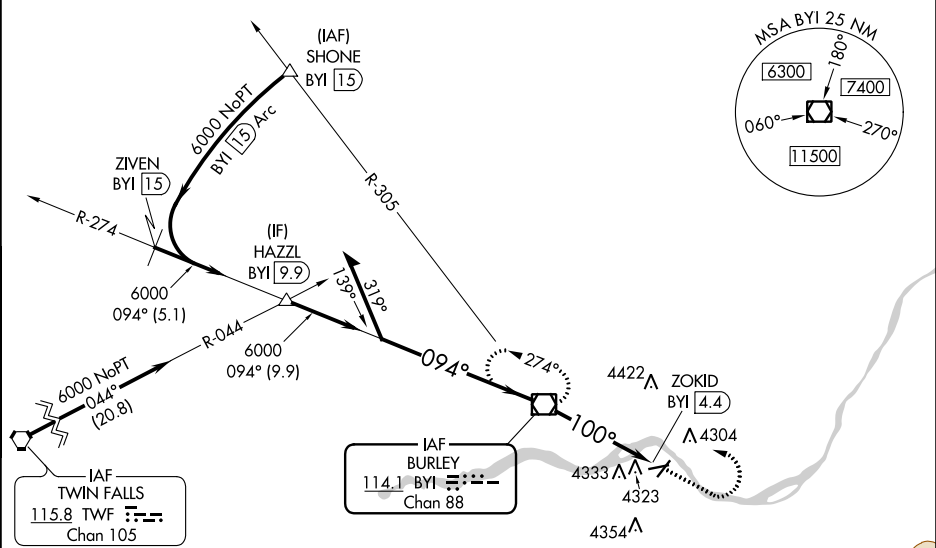
VOR-A

BURLEY MUNI (BYI)

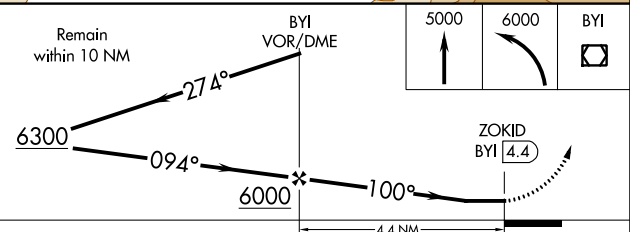
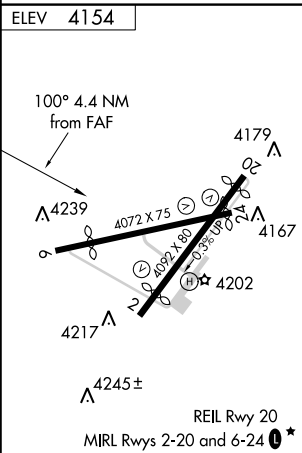
⚠ Circling Rwy 2, 20, 24 NA at night. Rwy 2, 20, 24 helicopter visibility reduction below 1 SM NA. When local altimeter setting not received, use Twin Falls altimeter setting and increase all MDAs 80 feet and visibility Cats C and D ¼ SM.


MISSED APPROACH: Climb to 5000 then climbing left turn to 6000 direct BYI VOR/DME and hold.

| | | |
|-----------------|--------------------------------------|-----------------|
| ASOS 135.575 | TWIN FALLS APP CON ★ 126.7 353.75 | CTAF 122.90★ |
|-----------------|--------------------------------------|-----------------|



Procedure NA for arrival on TWF
VORTAC airway radials 349 CW 097.



| FAF to MAP 4.4 NM | | | | | | CATEGORY | A | B | C | D |
|-------------------|------|------|------|------|------|--|-------------|-------------|--------------|-------------|
| Knots | 60 | 90 | 120 | 150 | 180 |  CIRCLING | 4640-1 | 4660-1 | 4740-1½ | 4780-2 |
| Min:Sec | 4:24 | 2:56 | 2:12 | 1:46 | 1:28 | | 486 (500-1) | 506 (600-1) | 586 (600-1½) | 626 (700-2) |

NW-1, 31 DEC 2020 to 28 JAN 2021

NW-1, 31 DEC 2020 to 28 JAN 2021