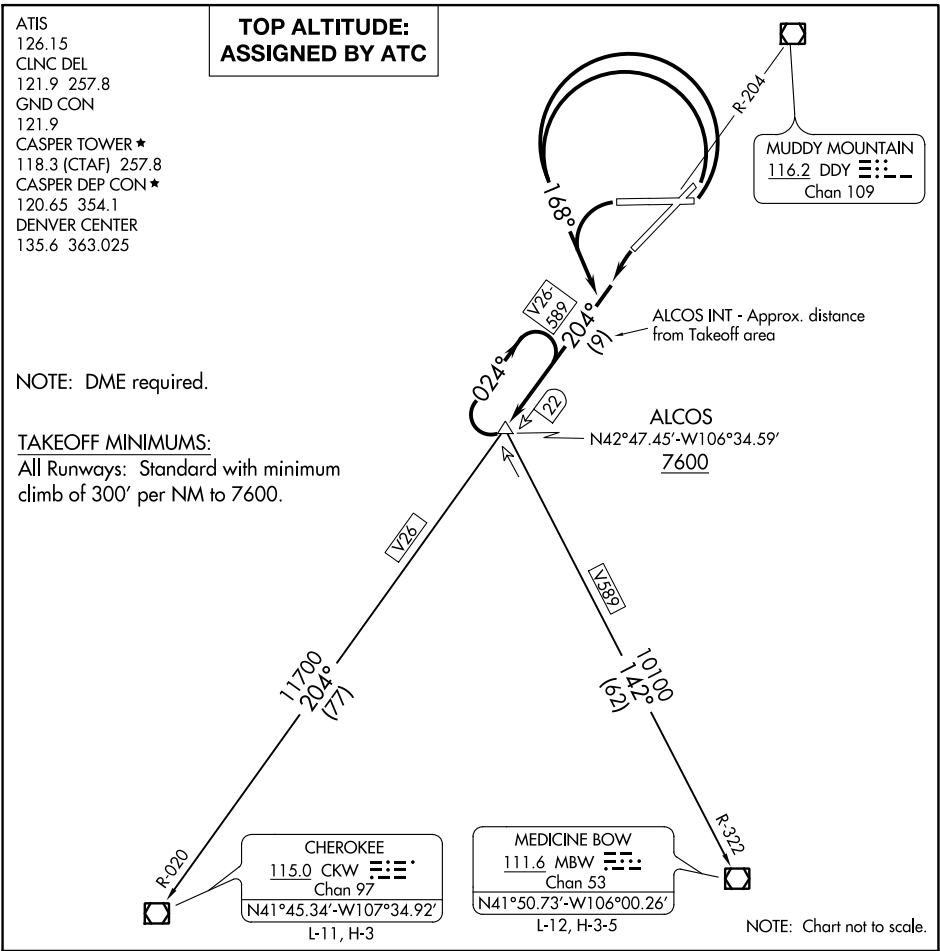


(ALCOS6.ALCOS) 18032
ALCOS SIX DEPARTURE

CASPER/NATRONA COUNTY INTL (CPR)
CASPER, WYOMING



DEPARTURE ROUTE DESCRIPTION

TAKEOFF RUNWAYS 3, 8, 26: Turn left heading 168°, thence. . .

TAKEOFF RUNWAY 21: Turn left, thence. . .

. . . climb on DDY VOR/DME R-204 to cross ALCOS INT 22 DME at or above 7600,
climb-in-hold to MEA for direction of flight, then via (transition) or (assigned route).

CHEROKEE TRANSITION (ALCOS6.CKW): From over ALCOS on DDY R-204 and
CKW R-020 to CKW VOR/DME.

MEDICINE BOW TRANSITION (ALCOS6.MBW): From over ALCOS on MBW R-322 to
MBW VOR/DME.

ALCOS SIX DEPARTURE
(ALCOS6.ALCOS) 21JUL16

CASPER, WYOMING
CASPER/NATRONA COUNTY INTL (CPR)

NW-1, 31 DEC 2020 to 28 JAN 2021

NW-1, 31 DEC 2020 to 28 JAN 2021