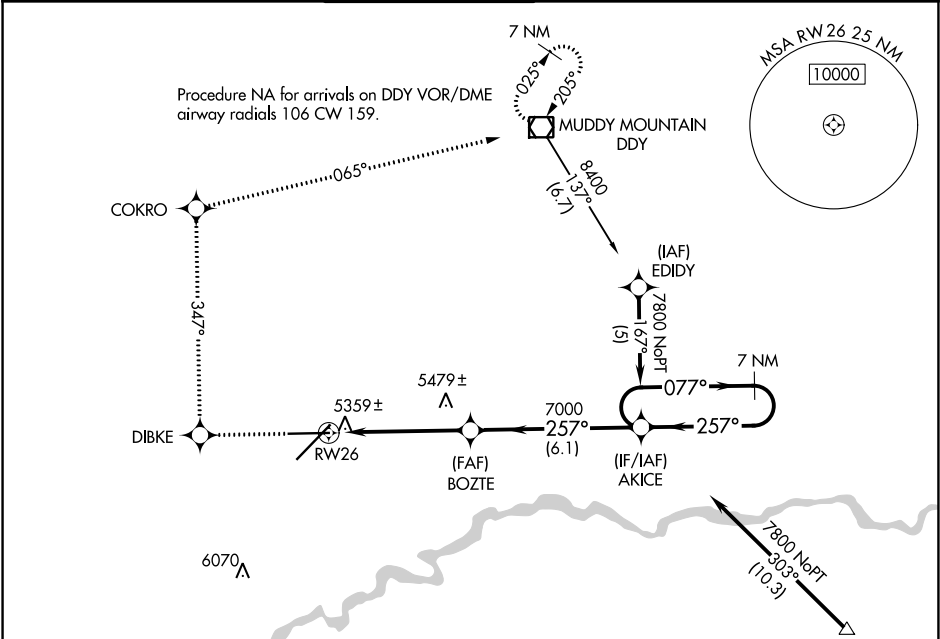


WAAS CH 78112 W26A	APP CRS 257°	Rwy Idg TDZE 5335 Apt Elev 5350
--	------------------------	---

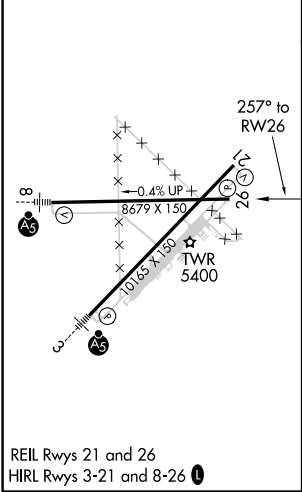
RNAV (GPS) RWY 26
CASPER/NATRONA COUNTY INTL (CPR)

▼ For uncompensated Baro-VNAV systems, LNAV/VNAV NA below -25°C (-13°F) or above 38°C (100°F). DME/DME RNP-0.3 NA.	MISSED APPROACH: Climb to 8400 direct DIBKE and right turn via track 347° to COKRO and via track 065° to DDY VOR/DME and hold.
---	---

ATIS 126.15	CASPER APP CON * 120.65 354.1	CASPER TOWER * 118.3 (CTAF) 0 257.8	GND CON 121.9	CLNC DEL 121.9 257.8	UNICOM 122.95
-----------------------	---	---	-------------------------	--------------------------------	-------------------------



ELEV 5350	D	TDZE 5335
-----------	----------	-----------



8400	DIBKE	COKRO	tr 065°	DDY	VGSI and RNAV glidepath not coincident (VGSI Angle 3.00/TCH 50).
8400	↑	tr 347°			
*LNAV only					AKICE
*1.2 NM to RW26					7 NM Holding Pattern
1.2 NM					GP 3.00° TCH 40
3.9 NM					
6.1 NM					
CATEGORY	A	B	C	D	
LPV DA	5585-1 250 (300-1)				
LNAV/VNAV DA	5629-1 294 (300-1)				
LNAV MDA	5740-1 405 (400-1)		5740-1¼ 405 (400-1¼)		
CIRCLING	5780-1 430 (500-1)	5800-1 450 (500-1)	5800-1½ 450 (500-1½)	5900-2 550 (600-2)	

NW-1, 31 DEC 2020 to 28 JAN 2021

NW-1, 31 DEC 2020 to 28 JAN 2021