

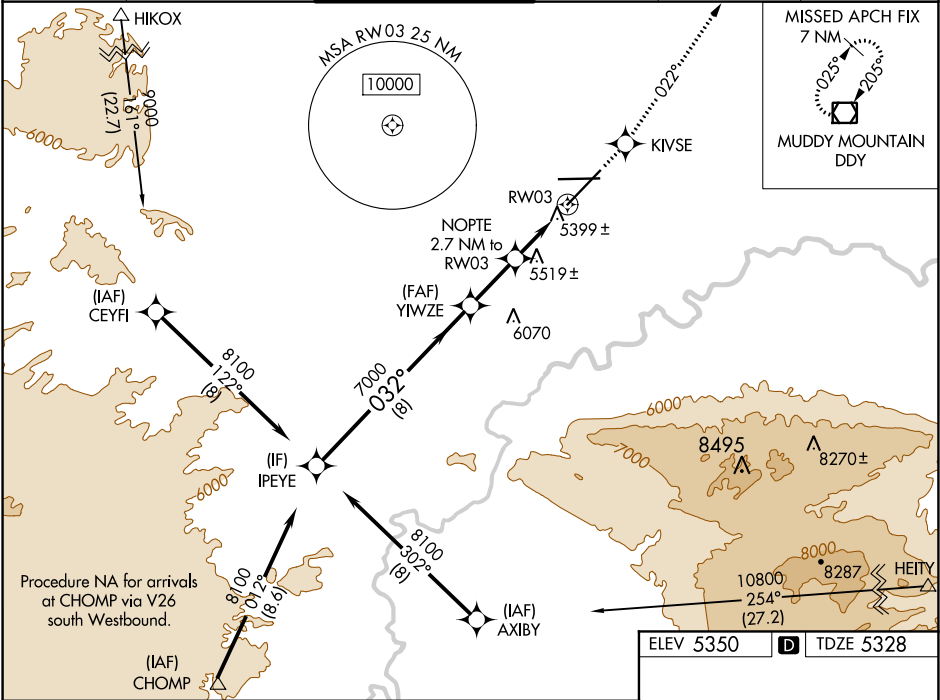
WAAS CH <b>73006</b> <b>W03A</b>	APP CRS <b>032°</b>	Rwy Idg <b>10165</b> TDZE <b>5328</b> Apt Elev <b>5350</b>
--	------------------------	--

RNAV (GPS) RWY 3

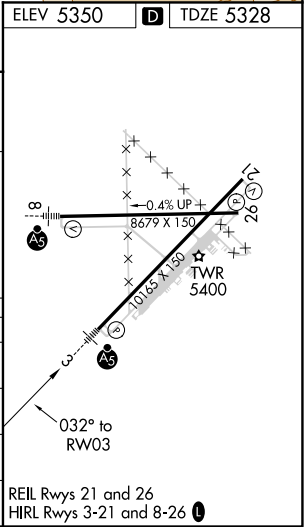
CASPER/NATRONA COUNTY INTL (CPR)

For inoperative MALS, increase LPV all Cats visibility to 1 mile. For uncompensated Baro-VNAV systems, LNAV/VNAV NA below -25°C (-13°F) or above 38°C (100°F). DME/DME RNP-0.3 NA.	MALS	MISSED APPROACH: Climb to 7500 direct KIVSE and via track 022° to DDY VOR/DME and hold.
--	------	---

ATIS <b>126.15</b>	CASPER APP CON * <b>120.65 354.1</b>	CASPER TOWER * <b>118.3 (CTAF) 0 257.8</b>	GND CON <b>121.9</b>	CLNC DEL <b>121.9 257.8</b>	UNICOM <b>122.95</b>
-----------------------	---	---	-------------------------	--------------------------------	-------------------------



Procedure Turn NA	IPEYE	YIWZE	NOPT	KIVSE	DDY
8100	032°	7000	2.7 NM to RW03	tr 022°	
GP 3.00°			1.3 NM to RW03		
TCH 52					
CATEGORY	A	B	C	D	
LPV DA	5643/24		315 (300-½)		
LNAV/VNAV DA	5691/40		363 (400-¾)		
LNAV MDA	5780/24	452 (500-½)	5780/40	5780/50	
			452 (500-¾)	452 (500-1)	
CIRCLING	5780-1	5800-1	5800-1½	5900-2	
	430 (500-1)	450 (500-1)	450 (500-1½)	550 (600-2)	



NW-1, 31 DEC 2020 to 28 JAN 2021

NW-1, 31 DEC 2020 to 28 JAN 2021