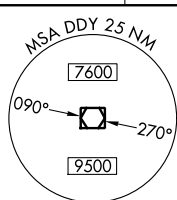


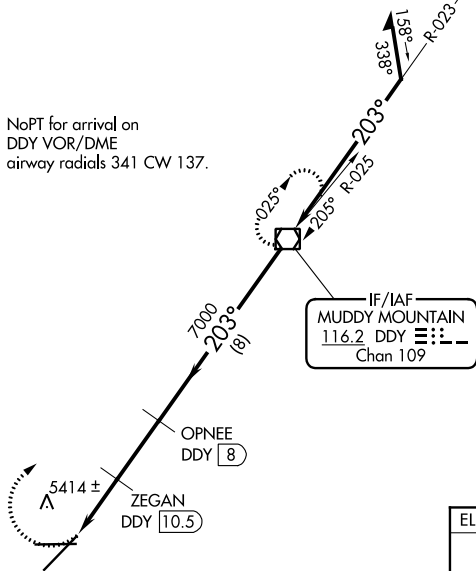
VOR/DME RWY 21
CASPER/NATRONA COUNTY INTL (CPR)


MISSED APPROACH: Climbing right turn to 7600 direct DDY VOR/DME and hold.

ATIS 126.15	CASPER APP CON ★ 120.65 354.1	CASPER TOWER ★ 118.3 (CTAF) 0 257.8	GND CON 121.9	CLNC DEL 121.9 257.8	UNICOM 122.95
----------------	----------------------------------	--	------------------	-------------------------	------------------



NoPT for arrival on
DDY VOR/DME
airway radials 341 CW 137.



IF/IAF
MUDDY MOUNTAIN
116.2 DDY 
Chan 109

