

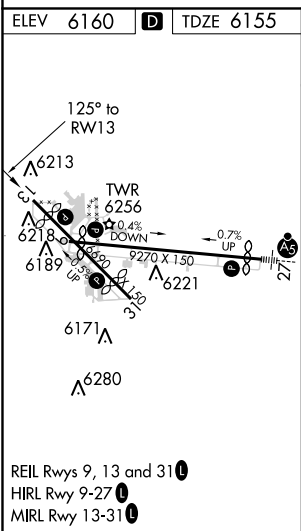
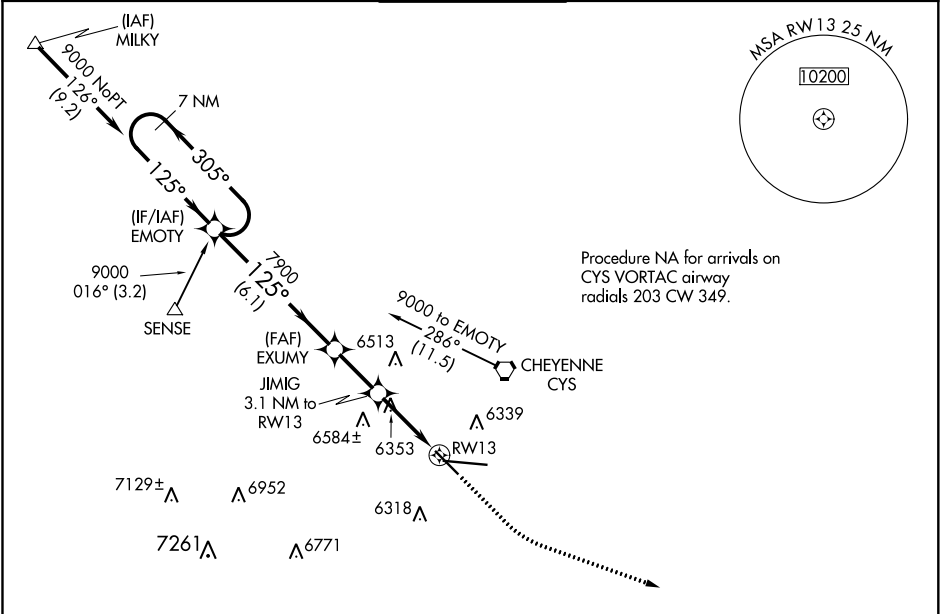
WAAS CH 56609 W13A	APP CRS 125°	Rwy ldg TDZE Apt Elev	4830 6155 6160
--	------------------------	-----------------------------	---

RNAV (GPS) RWY 13

CHEYENNE RGNL/JERRY OLSON FIELD (CYS)

RNP APCH.	For uncompensated Baro-VNAV systems, LNAV/VNAV NA below -24°C or above 45°C. Rwy 13 helicopter visibility reduction below ¾ SM NA.	MISSED APPROACH: Climb to 6600, then climbing left turn to 8500 direct HAMER and hold.
ASR/PAR		

ATIS 134.425 278.3	CHEYENNE APP CON★ 124.55 263.075	CHEYENNE TOWER★ 118.7(CTAF) 0 257.8	GND CON 121.9 254.275	UNICOM 122.95
------------------------------	--	---	---------------------------------	-------------------------



A7002			

NW-1, 31 DEC 2020 to 28 JAN 2021

NW-1, 31 DEC 2020 to 28 JAN 2021