

VOR/DME ELN	APP CRS	Rwy Idg	N/A
117.9	260°	TDZE	N/A
Chan 126		Apt Elev	1764

VOR-A

BOWERS FIELD (ELN)

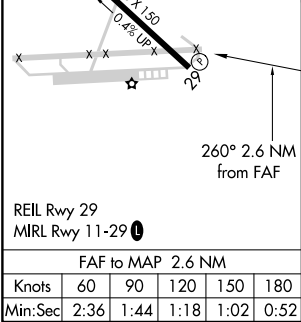
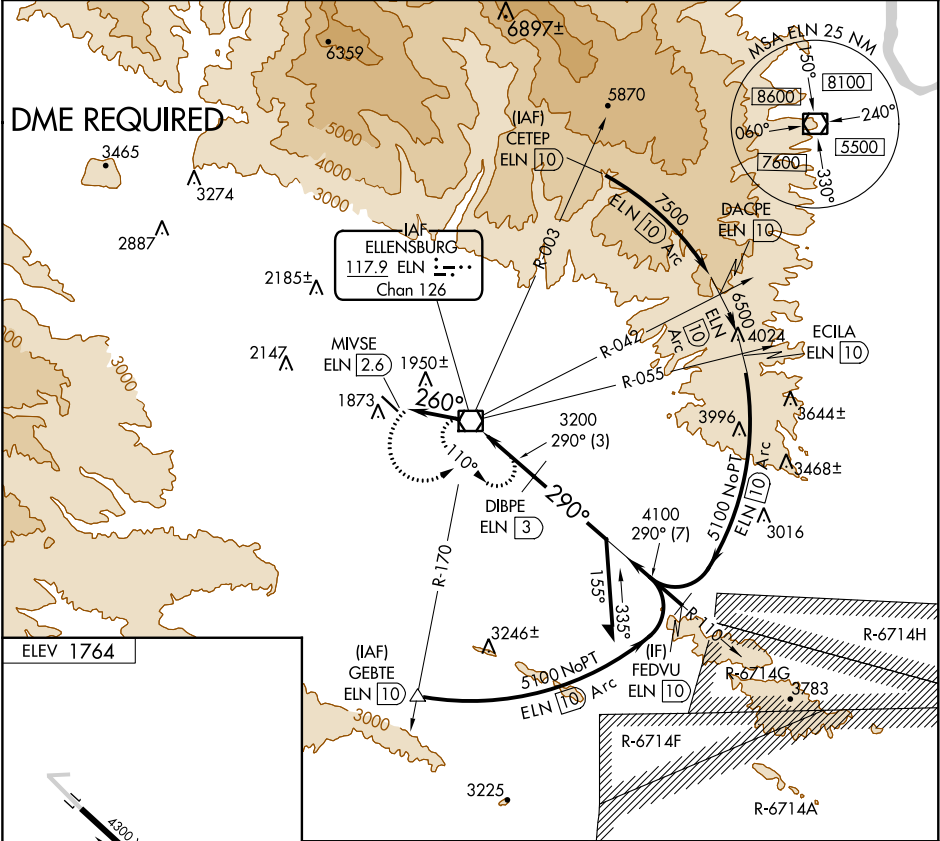
▼

NA

Procedure NA when R-6714A, F, G, H are in operation.
DME required.

MISSED APPROACH: Climbing left turn to 5000 direct
ELN VOR/DME and hold.

ASOS 118.375	SEATTLE CENTER 132.6 269.35	UNICOM 123.0 (CTAF) 1
-----------------	--------------------------------	--------------------------



5000	ELN	ELN VOR/DME	110°	290°	5000	4100	3200	260°	MIVSE ELN 2.6	DIBPE ELN 3	5000	Remain within 10 NM
2.6 NM 3 NM												
CATEGORY												
A												
B												
C												
D												
CIRCLING												
2280-1												
516 (600-1)												
2340-1												
576 (600-1)												
NA												