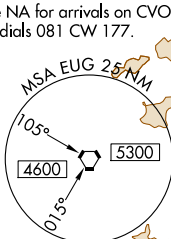


ILS RWY 16R (CAT II & III)
MAHLON SWEET FIELD (EUG)

ALSF-2

climbing right turn to 5000 on heading 230° and on EUG VORTAC R-210 to VAUGN/EUG 14 DME and hold, continue climb-in-hold to 5000.

GND CON	CLNC DEL	UNICOM
121.7 269.5	121.7 269.5	122.95



NW-1, 31 DEC 2020 to 28 JAN 2021

NW-1, 31 DEC 2020 to 28 JAN 2021

[illegible]

CATEGORY	A	B	C	D
S-ILS 16R	CAT II RA 108/12 100 DA 464			
S-ILS 16R	CAT III RVR 06			

CATEGORY II & III ILS - SPECIAL AIRCREW
& AIRCRAFT CERTIFICATION REQUIRED