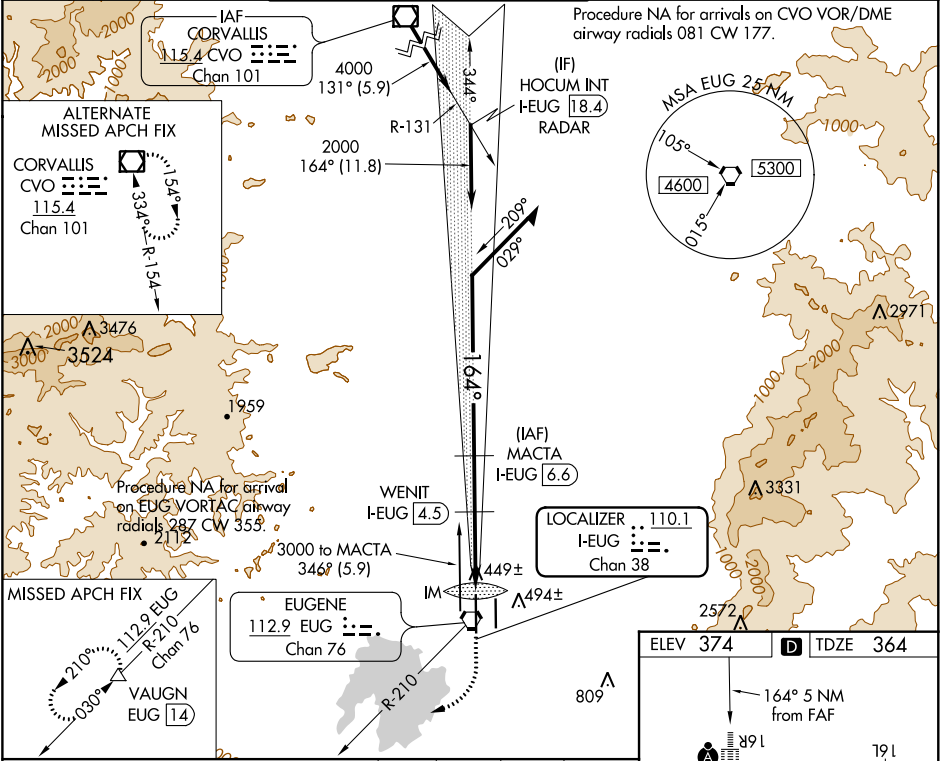


LOC/DME I-EUG 110.1 Chan 38	APP CRS 164°	Rwy ldg 8009 TDZE 364 Apt Elev 374
---	------------------------	---

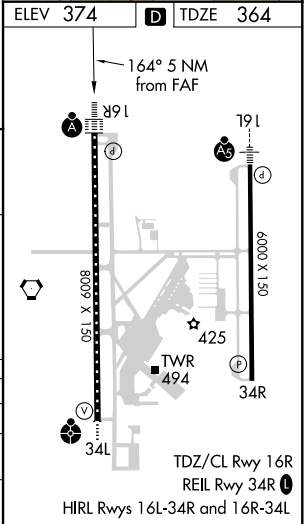
DME required.	ALSF-2
Simultaneous approach authorized.	

ILS or LOC RWY 16R
MAHLON SWEET FIELD (EUG)

ATIS 125.225	CASCADE APP CON ★ 119.6 348.7	EUGENE TOWER ★ 118.9 (CTAF) 371.9 (Rwy 16R/34L) 124.15 371.9 (Rwy 16L/34R)	GND CON 121.7 269.5	CLNC DEL 121.7 269.5	UNICOM 122.95
------------------------	---	---	-------------------------------	--------------------------------	-------------------------



Use I-EUG DME when on localizer course.	MACTA I-EUG 6.6	1000	5000	EUG R-210	VAUGN
Remain within 10 NM	344°	6000	hdg 230°		
2500	164°	2000	WENIT I-EUG 4.5	*I-EUG 2.5	*LOC only
GS 3.00° TCH 51	2000		IM 1.6	I-EUG 1.6	
			*1360		
			2 NM	2.1 NM	0.7 0.2
CATEGORY	A	B	C	D	
S-ILS 16R		564/18	200 (200-½)		
S-LOC 16R	700/24	336 (400-½)	700/26	336 (400-½)	
CIRCLING	820-1 446 (500-1)	840-1 466 (500-1)	1000-1¼ 626 (700-1¼)	1140-2½ 766 (800-2½)	



NW-1, 31 DEC 2020 to 28 JAN 2021

NW-1, 31 DEC 2020 to 28 JAN 2021