

APP CRS	Rwy Idg	8009
343°	TDZE	368
	Apt Elev	374

RNAV (RNP) Z RWY 34L

MAHLON SWEET FIELD (EUG)

T For uncompensated Baro-VNAV systems, procedure NA below -9°C (16°F) or above 54°C (130°F). Simultaneous approach authorized. GPS required.

ODALS

MISSED APPROACH: Climb to 1500, then climbing left turn to 4000 direct VAUGN and hold.

ATIS 125.225	CASCADE APP CON★ 119.6 348.7	EUGENE TOWER★ 118.9 (CTAF) 0 371.9 (Rwy 16R/34L) 124.15 371.9 (Rwy 16L/34R)	GND CON 121.7 269.5	CLNC DEL 121.7 269.5	UNICOM 122.95
------------------------	--	---	-------------------------------	--------------------------------	-------------------------

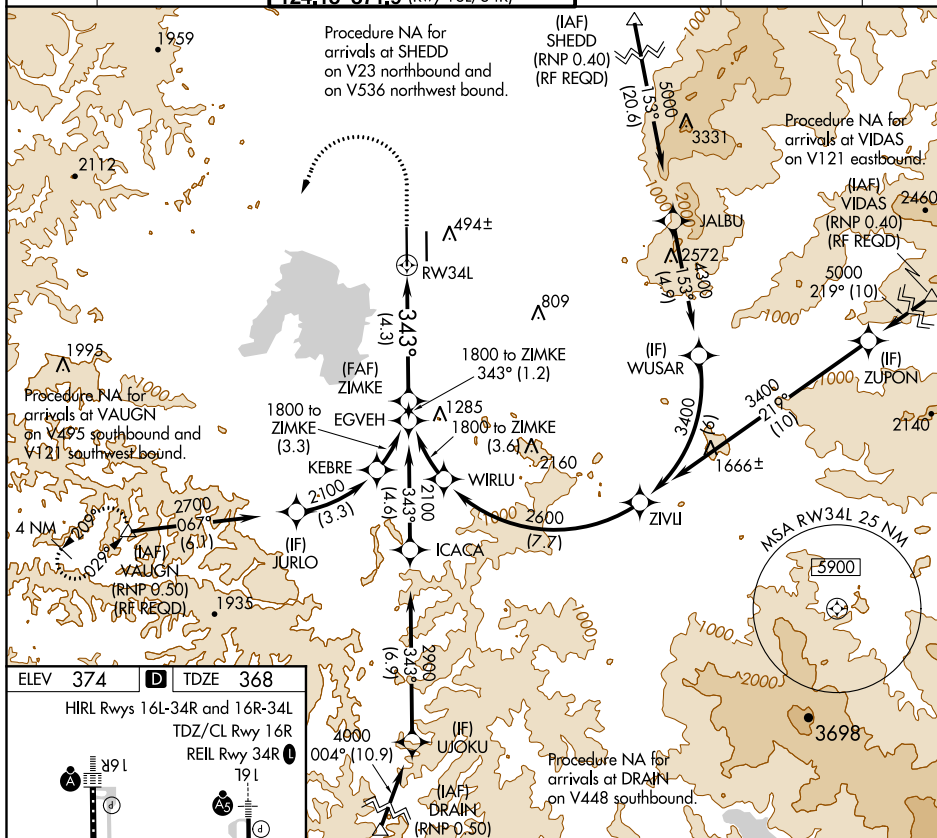


Diagram illustrating the HIRL Rwy 16L-34R and 16R-34L intersection. The diagram shows the layout of the runways, including the 8009 X 150 and 6000 X 150 dimensions. Key features include the VORTAC station (A) at the top of 16L, the VORTAC station (A5) at the top of 16R, the VOR station (V) at the bottom of 34R, and the Tower (TWR 494) located near the intersection. The diagram also shows the TDZ/CL Rwy 16R and REIL Rwy 34R. The elevation is 374 feet. The diagram is labeled 'HIRL Rwy 16L-34R and 16R-34L' and 'TDZ/CL Rwy 16R'.

1500 ↑	4000 ↖	VAUGHN △	See planview for multiple IF locations.				ZIMKE 1800
RW34L		4.3 NM		343°		1800	GP 3.00° TCH 53
CATEGORY	A	B	C	D			
RNP 0.30 DA	759/50 391 (400-1)						
AUTHORIZATION REQUIRED							

RNAV (RNP) Z RWY 34L