

APP CRS
343°

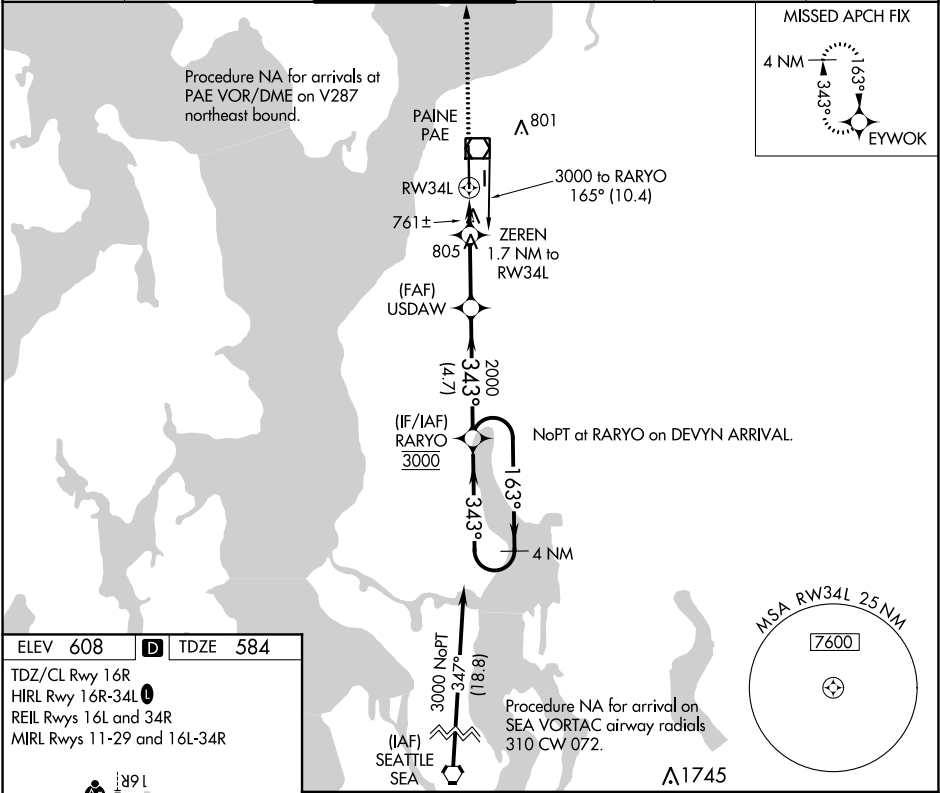
Rwy Idg
TDZE
584

Apt Elev
608

RNAV (GPS) RWY 34L

SNOHOMISH COUNTY (PAINE FIELD) (P.A.E.)

▼ Circling Rwy 34R NA at night. Rwy 34L helicopter visibility reduction below ¾ SM NA. DME/DME RNP-0.3 NA.		MALSF	MISSED APPROACH: Climb to 3000 direct EYWOK and hold.		
ATIS 128.65	SEATTLE APP CON 128.5 306.9	PAINE TOWER ★ 132.95 (CTAF) 0 256.7	GND CON 121.8 339.8	CLNC DEL 127.175	UNICOM 122.95



3000

↑

EYWOK

VGSI and descent angles not coincident

(VGSI Angle 3.00/TCH 75).

ZEREN

1.7 NM to RW34L

USDAW

RARYO

4 NM Holding Pattern

163°

→

3000

←

343°

3000

1160

2000

3.00°

TCH 51

1.2 NM to RW34L

1.2 NM

0.5 NM

2.6 NM

4.7 NM

CATEGORY	A		B		C		D	
LNAV MDA	1020-¾ 436 (500-¾)		1020-1 436 (500-1)		1020-1 436 (500-1)		1020-1 436 (500-1)	
C CIRCLING	1100-1 492 (500-1)		1120-1½ 512 (600-1½)		1160-2 552 (600-2)		1160-2 552 (600-2)	