

WAAS CH 61129 W16A	APP CRS 163°	Rwy Idg TDZE Apt Elev	9010 570 608
--	------------------------	-----------------------------	---

RNAV (GPS) Z RWY 16R

SNOHOMISH COUNTY (PAINE FIELD) (P A E)

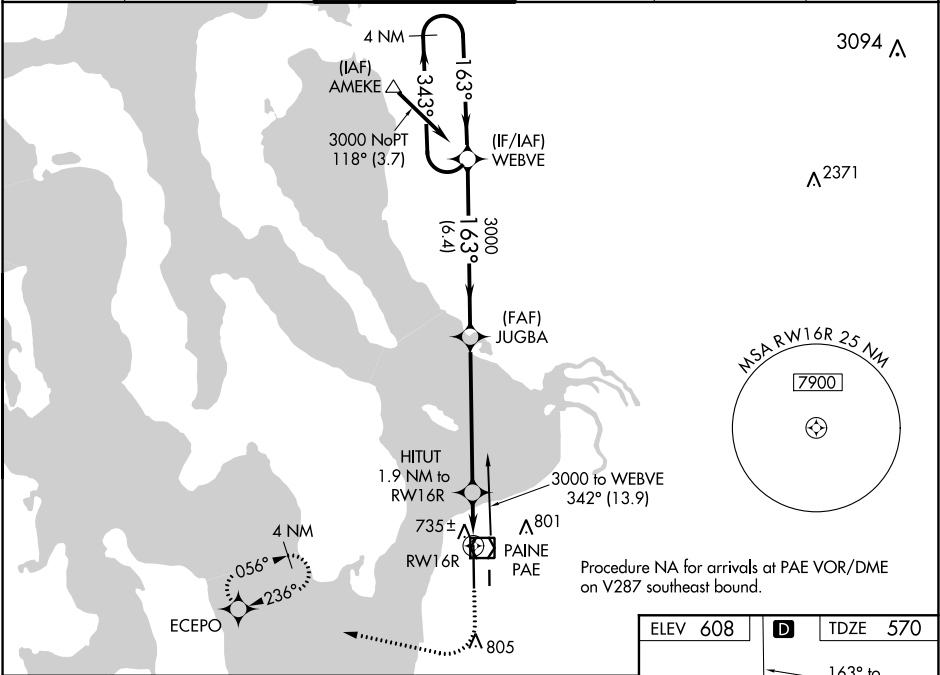
▼

For uncompensated Baro-VNAV systems, LNAV/VNAV NA below -5°C (23°F) or above 54°C (130°F). Circling Rwy 34R NA at night. DME/DME RNP-0.3 NA.

MALSR

MISSED APPROACH: (Do not exceed 240K until ECEPO) Climb to 1100 then climbing right turn to 3000 direct ECEPO and hold, continue climb-in-hold to 3000.

ATIS 128.65	SEATTLE APP CON 128.5 306.9	PAINE TOWER ★ 132.95 (CTAF) 0 256.7	GND CON 121.8 339.8	CLNC DEL 127.175	UNICOM 122.95
-----------------------	---------------------------------------	---	-------------------------------	----------------------------	-------------------------



VGSI and RNAV glidepath not coincident (VGSI Angle 3.00/TCH 74).				
<div>4 NM Holding Pattern</div> <div>3000 ← 343° 163° → 3000</div> <div>GP 3.00° TCH 57</div> <div>6.4 NM 5.6 NM 0.8 NM 1.1 NM</div>				
CATEGORY	A	B	C	D
LPV DA	770/18 200 (200-½)			
LNAV/VNAV DA	913/30 343 (400-⅝)			
LNAV MDA	1000/24 430 (400-½)	1000/40 430 (400-¾)		
Ⓢ CIRCLING	1100-1 492 (500-1)	1120-1½ 512 (600-1½)	1160-2 552 (600-2)	

